



## Chess (phasing out), 2296 Checkmate

### Grade 2

**Content:** 80% Recycled Polyester, 20% Olefin

**Backing:** Acrylic

**Width:** 54"

**Finish:** Teflon

**Abrasion:** 114,000 Double Rubs

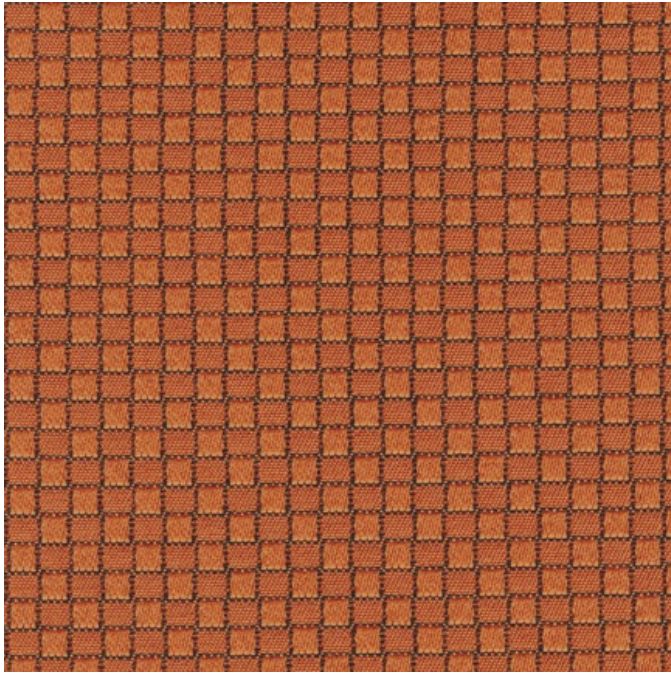
**Rating:** Heavy Duty

**Lightfastness:** 40 Hrs., Class 5

**Pattern Repeat:** 1/2" L, 1/2" W

**Flammability:** Passes California TB 117-2013; UFAC Class 1; NFPA 260 Class 1

**Cleaning Code:** SW



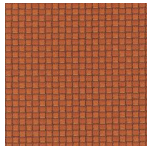
#### Fabric Disclaimer

Monitors and display settings vary widely between computers. As a result, all fabric colors shown here are approximate and subject to variance from the actual color on physical chairs. For more accurate ideas of color tones, etc. please contact your favorite OM representative to obtain a sample or fabric swatch.

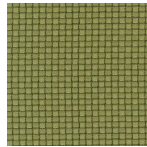
#### Low Quantity



2293  
Castle



2296  
Checkmate



2298  
Pawn