



## Zodiac Mesh, 2300 Scorpio



Zodiac Mesh, 2300 Scorpio

**Content:** 100% Polyester

**Backing:** None

**Width:** 54"

**Finish:** None

**Abrasion:** Exceeds 1,002,000 Double Rubs (Cotton Duck)

**Breaking Strength:** Warp 129 lbf. / Fill 78 lbf.

**Colorfastness:** Class 4 min.

**Lightfastness:** 40 Hrs. - Class 5

**Flammability:** Passes California TB 117-2013; NFPA 260, Class 1; ASTM E84, Class 1 or A; FMVSS 302

**Cleaning Code:** W

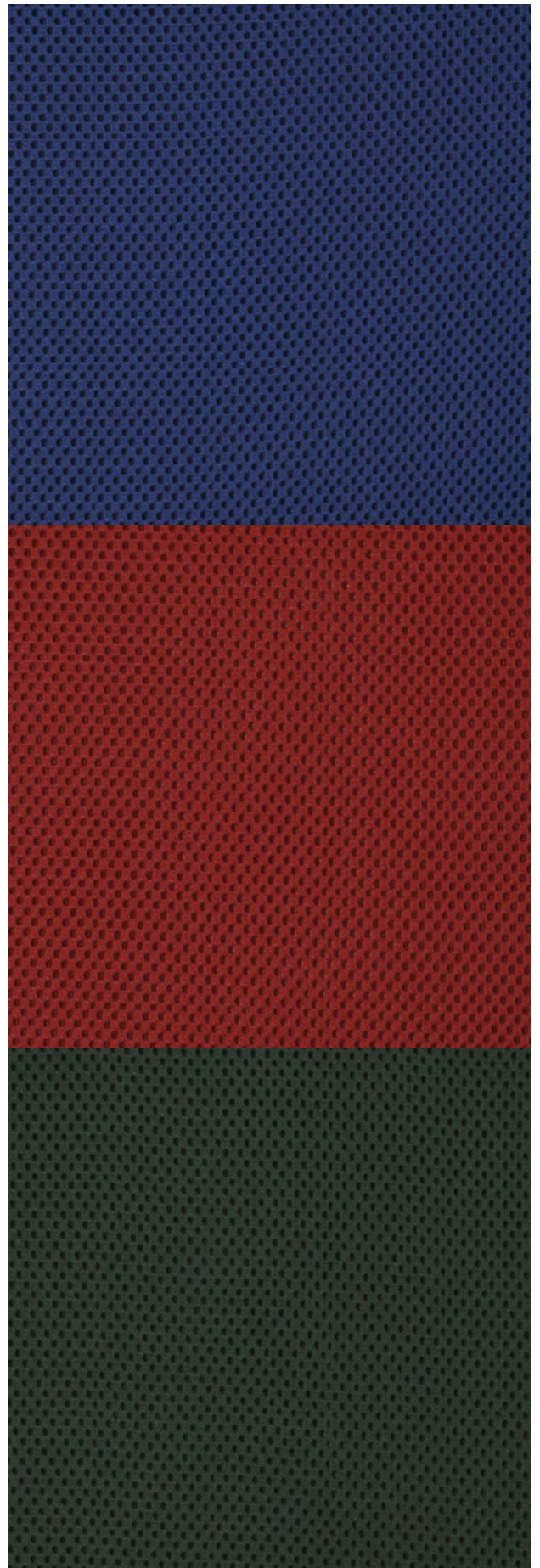
---

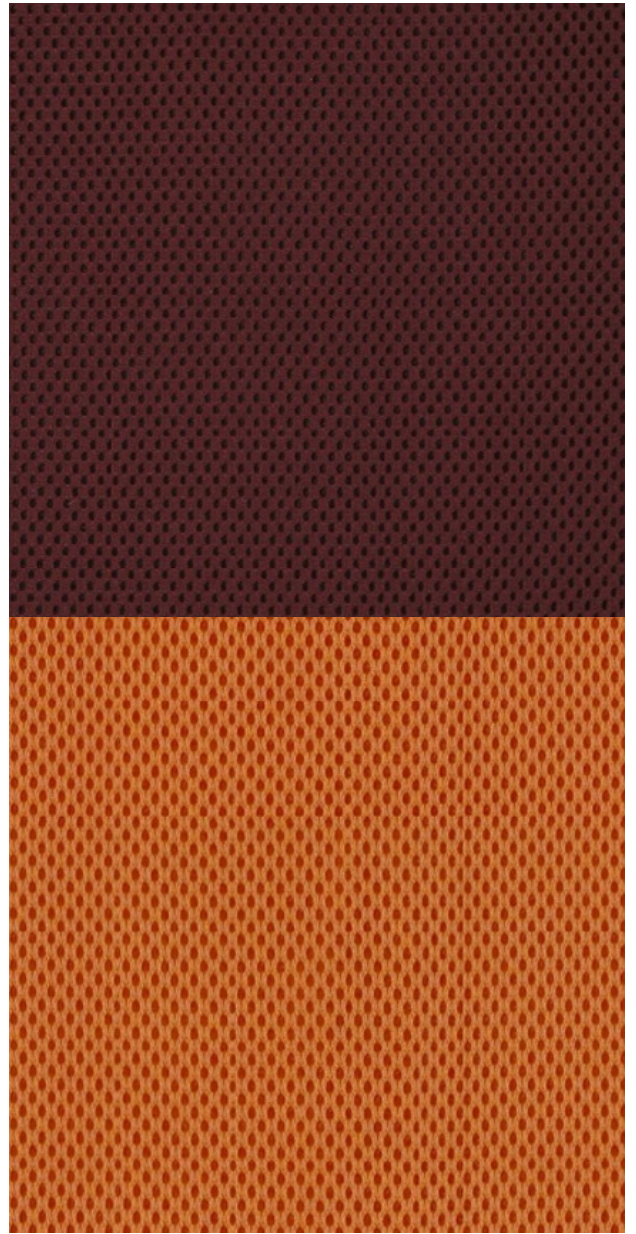
### Lead Time

**Fabric Disclaimer** Monitors and display settings vary widely between computers. As a result, all fabric colors shown here are approximate and subject to variance from the actual color on physical chairs. For more accurate ideas of color tones, etc. please contact your favorite OM representative to obtain a sample or fabric swatch.









**OM SEATING** 1110 SOUTH MILDRED AVENUE, ONTARIO, CALIFORNIA 91761 [OMSEATING.COM](http://OMSEATING.COM) | 877.776.5678 | FAX 909.392.5678