

**Fabric Disclaimer**

Monitors and display settings vary widely between computers. As a result, all fabric colors shown here are approximate and subject to variance from the actual color on physical chairs. For more accurate ideas of color tones, etc. please contact your favorite OM representative to obtain a sample or fabric swatch.

**Knack (phasing out), 2546 Teak  
Grade 2**

**Content:** 100% Post Consumer Recycled Polyester

**Width:** 54"

**Weight:** 0.71 lb.

**Backing:** Acrylic

**Finish:** Soil and Stain Resistant

**Repeat Length:** 1.625"

**Repeat Width:** 1.75"

**Railroaded:** No

**Abrasion:** 100,000 Double Rubs

**Breaking Strength:** Warp 50 lbs. / Fill 50 lbs.

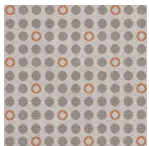
**Crocking:** Dry Class 4 / Wet Class 3

**Lightfastness:** 40 Hrs. - Class 5

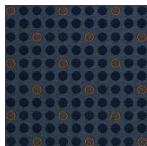
**Flammability:** Passes California TB 117-2013; NFPA 260, CLASS 1; UFAC, CLASS 1

**Cleaning Code:** WS

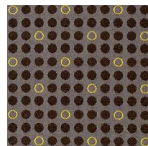
**Low Quantity**



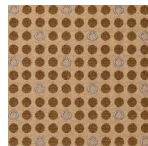
2542  
Filament



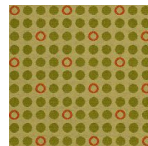
2544  
Brisk



2545  
Fresco



2546  
Teak



2548  
Zing