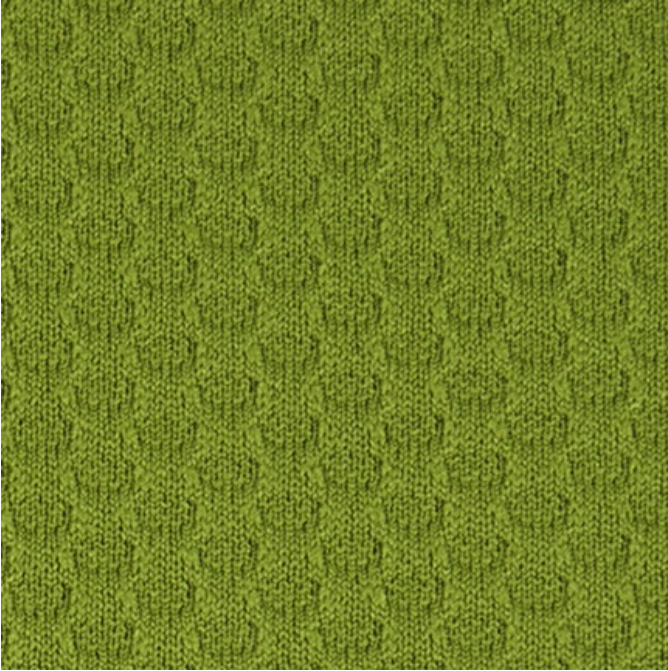




## SoftSit Fabric, 2578 Kipuka



SoftSit Fabric, 2578 Kipuka

**Content:** 100% Polyester

**Width:** 58/59" usable

**Weight:** 17.87 +/- 1.0 oz./linear yard

**Backing:** 100% Polyester non-woven scrim

**Finish:** None

**Repeat:** No

**Abrasion:** 110,000 Double Rubs

**Breaking Strength:** Warp 199 lbs. / Fill 199 lbs.

**Crocking:** Dry Class 4 / Wet Class 3

**Lightfastness:** 20 Hrs. - Class 4

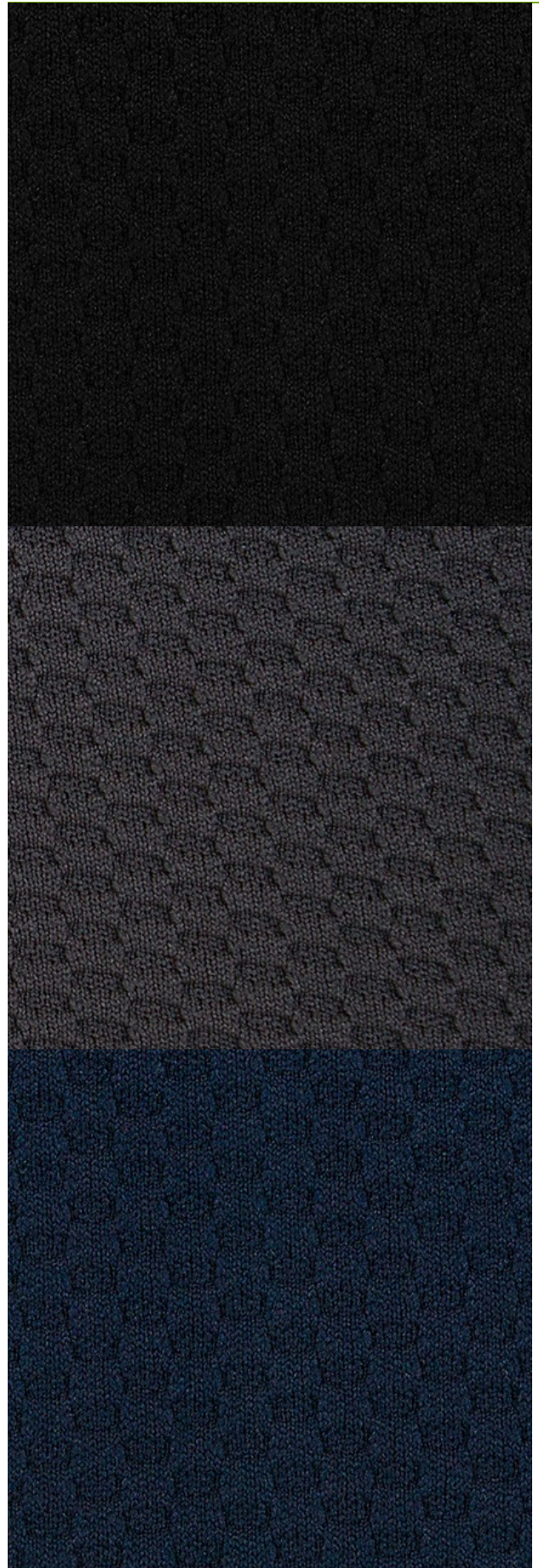
**Flammability:** Passes California TB 117-2013

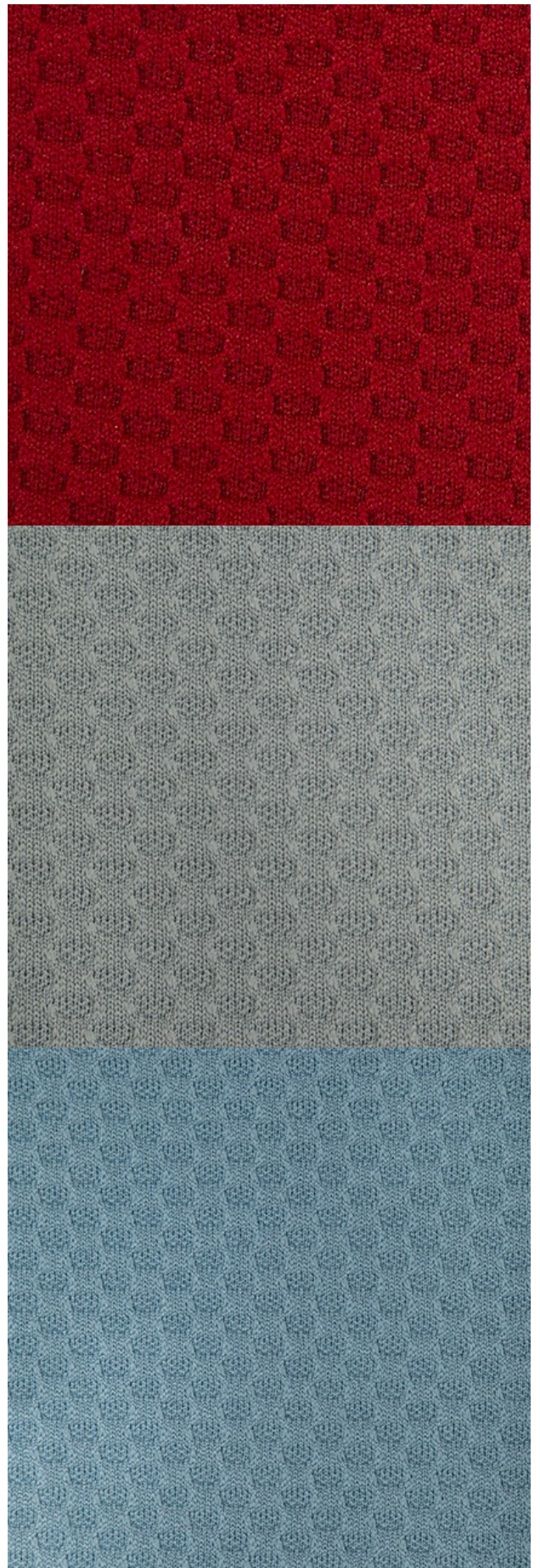
**Cleaning Code:** WS

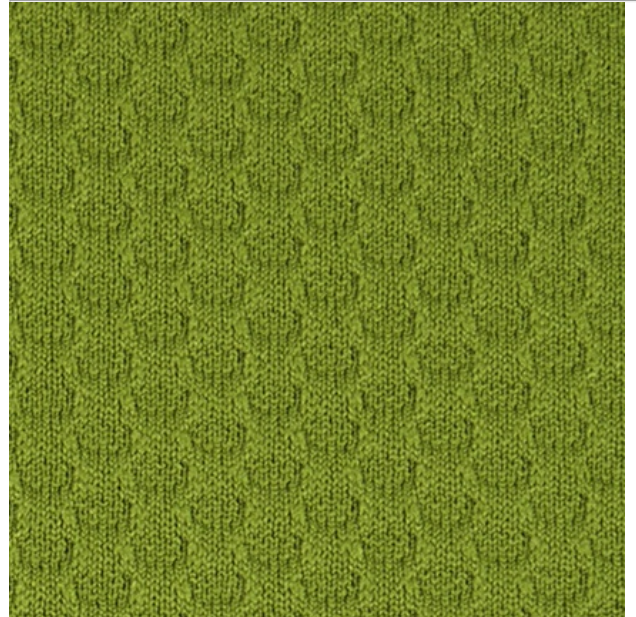
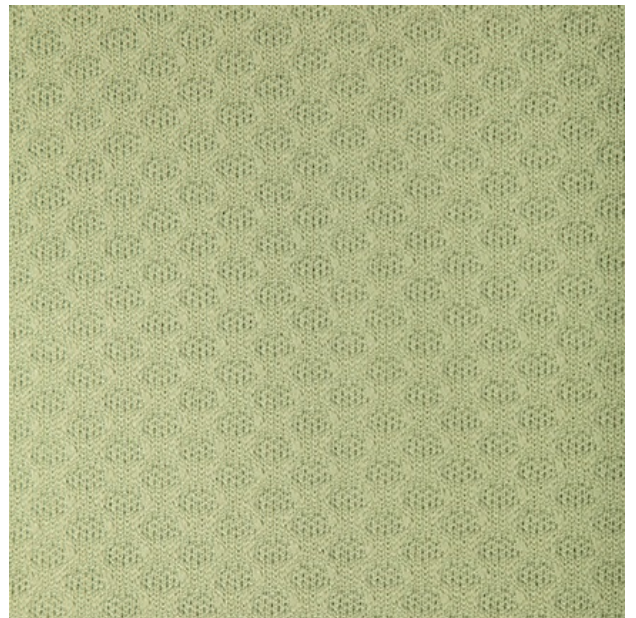
---

### Lead Time

**Fabric Disclaimer** Monitors and display settings vary widely between computers. As a result, all fabric colors shown here are approximate and subject to variance from the actual color on physical chairs. For more accurate ideas of color tones, etc. please contact your favorite OM representative to obtain a sample or fabric swatch.









**OM SEATING** 1110 SOUTH MILDRED AVENUE, ONTARIO, CALIFORNIA 91761 [OMSEATING.COM](http://OMSEATING.COM) | 877.776.5678 | FAX 909.392.5678