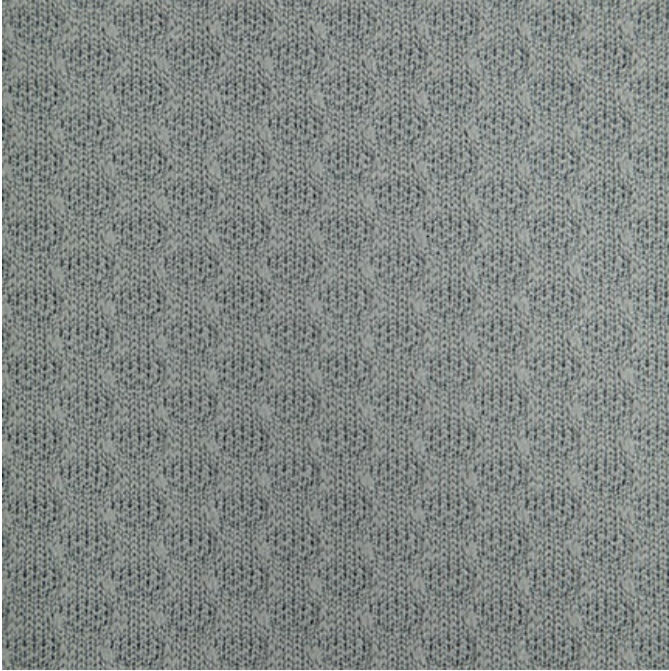




SoftSit Fabric, 2582 Salina



SoftSit Fabric, 2582 Salina

Content: 100% Polyester

Width: 58/59" usable

Weight: 17.87 +/- 1.0 oz./linear yard

Backing: 100% Polyester non-woven scrim

Finish: None

Repeat: No

Abrasion: 110,000 Double Rubs

Breaking Strength: Warp 199 lbs. / Fill 199 lbs.

Crocking: Dry Class 4 / Wet Class 3

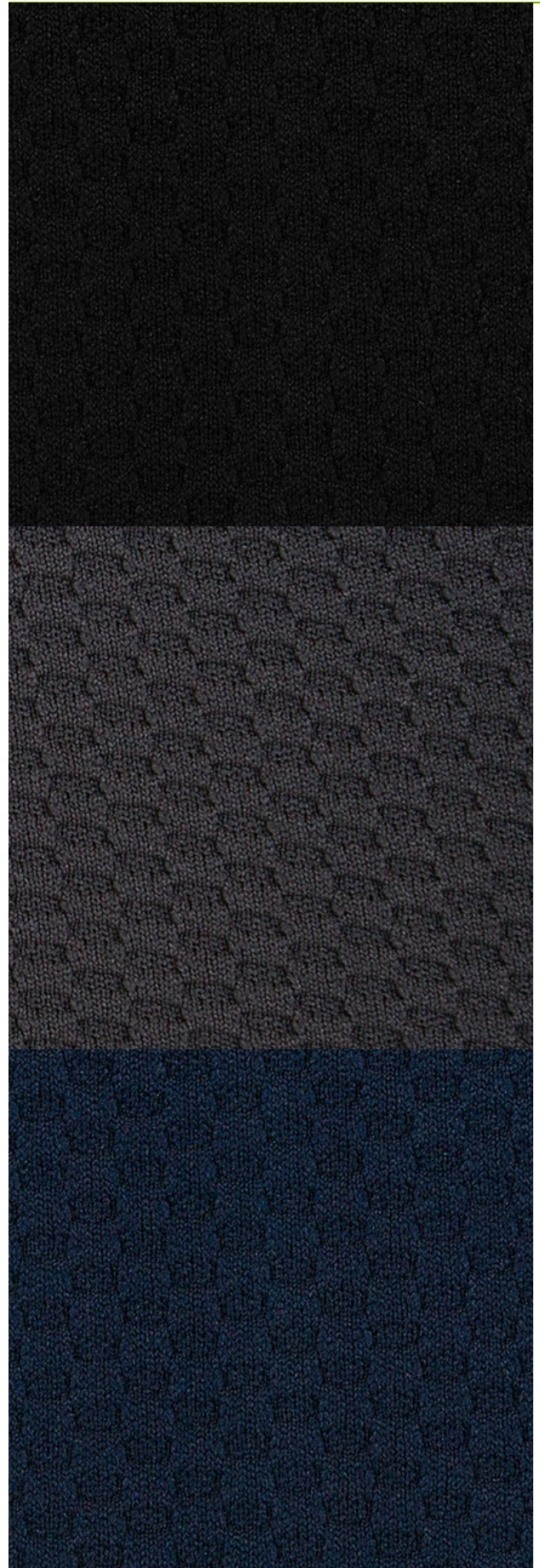
Lightfastness: 20 Hrs. - Class 4

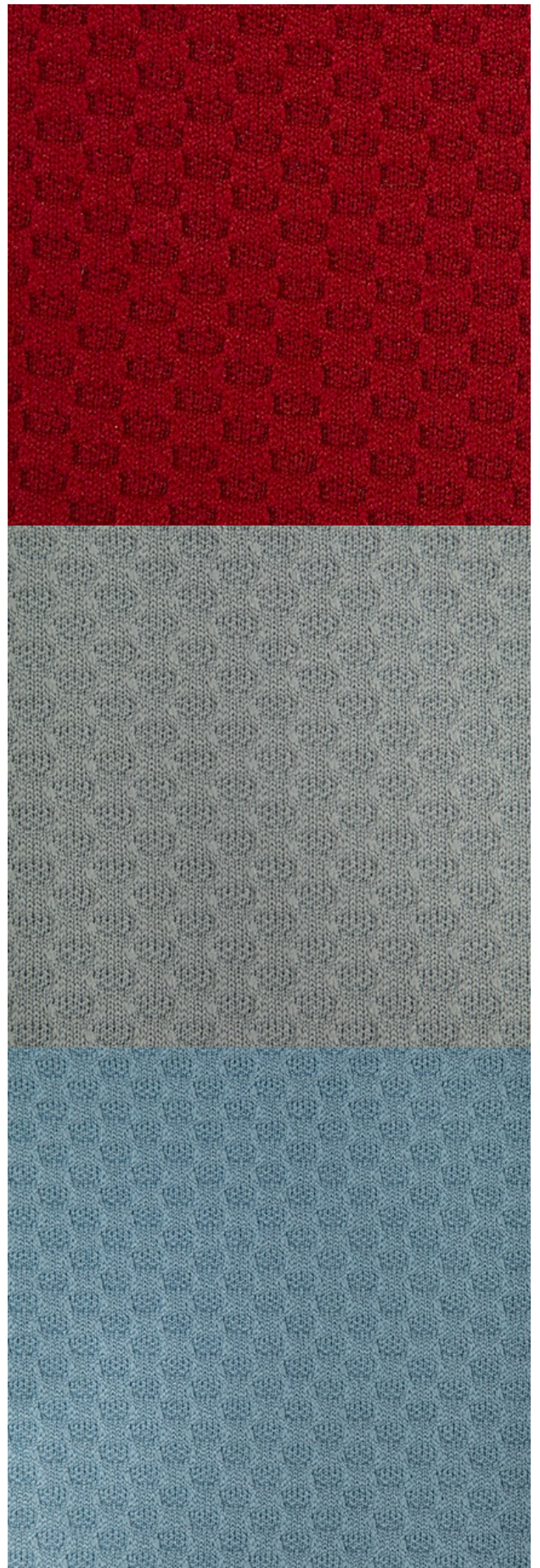
Flammability: Passes California TB 117-2013

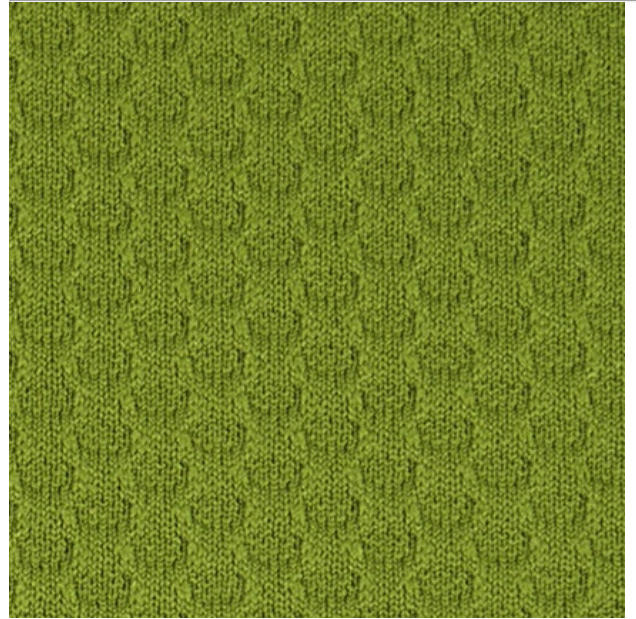
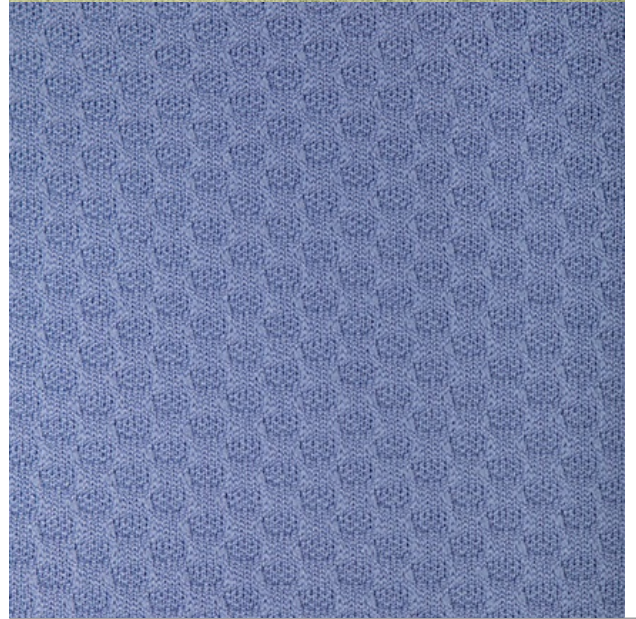
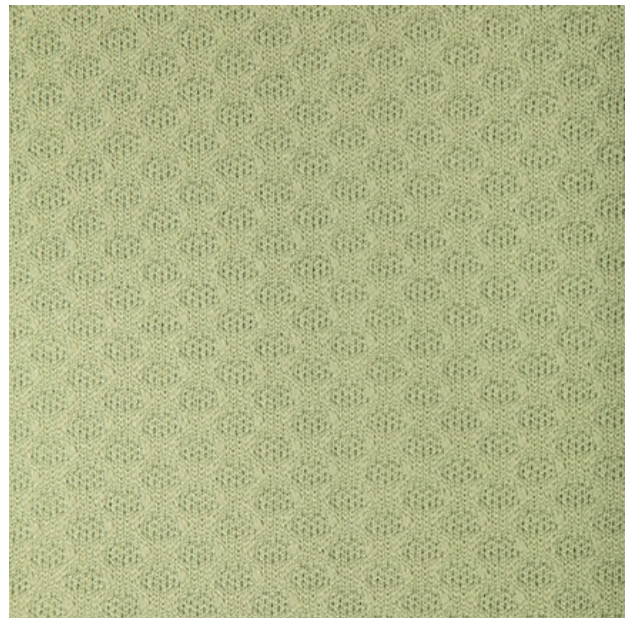
Cleaning Code: WS

Lead Time

Fabric Disclaimer Monitors and display settings vary widely between computers. As a result, all fabric colors shown here are approximate and subject to variance from the actual color on physical chairs. For more accurate ideas of color tones, etc. please contact your favorite OM representative to obtain a sample or fabric swatch.









OM SEATING 1110 SOUTH MILDRED AVENUE, ONTARIO, CALIFORNIA 91761 OMSEATING.COM | 877.776.5678 | FAX 909.392.5678