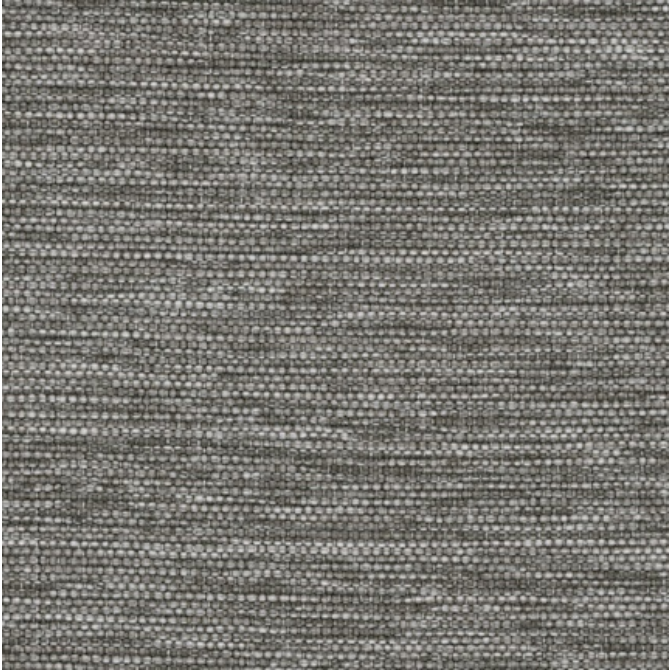




## Beau, 3802 Deary



Beau, 3802 Deary

**Content:** 70% Polypropylene, 30% Polyester

**Width:** 54"

**Weight:** 16.04 oz./linear yard

**Backing:** Latex

**Finish:** Stain Repellent

**Repeat:** None

**Directional:** Yes

**Railroaded:** No

**Abrasion:** Exceeds 100,000 Double Rubs

**Breaking Strength:** Warp

**Crocking:** Dry Class 4 / Wet Class 4

**Lightfastness:** 40 Hrs. - Grade 5

**Flammability:** Passes Cal 117-2013; NFPA 260/UFAC Class 1; May comply with Cal. Tech. Bul. 133 when combined with appropriate components.

**Cleaning Code:** W, BC

---

### Lead Time

**Fabric Disclaimer** Monitors and display settings vary widely between computers. As a result, all fabric colors shown here are approximate and subject to variance from the actual color on physical chairs. For more accurate ideas of color tones, etc. please contact your favorite OM representative to obtain a sample or fabric swatch.

