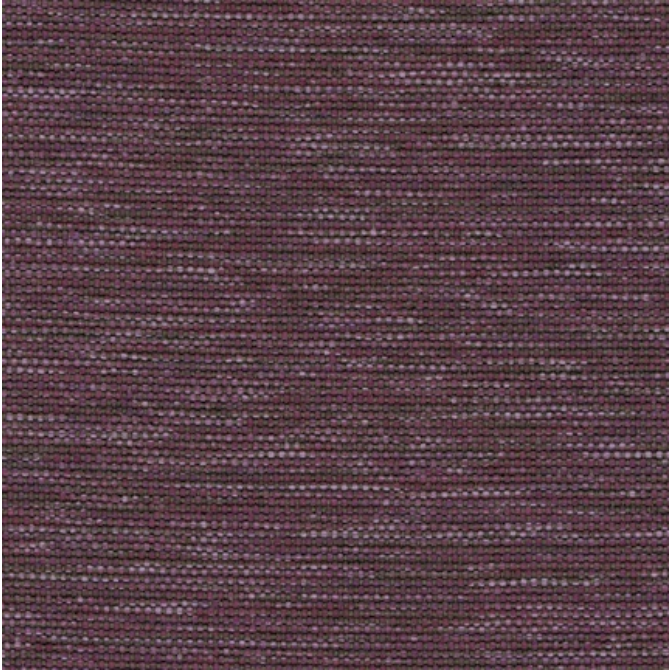




Beau, 3809 Cutie



Beau, 3809 Cutie

Content: 70% Polypropylene, 30% Polyester

Width: 54"

Weight: 16.04 oz./linear yard

Backing: Latex

Finish: Stain Repellent

Repeat: None

Directional: Yes

Railroaded: No

Abrasion: Exceeds 100,000 Double Rubs

Breaking Strength: Warp

Crocking: Dry Class 4 / Wet Class 4

Lightfastness: 40 Hrs. - Grade 5

Flammability: Passes Cal 117-2013; NFPA 260/UFAC Class 1; May comply with Cal. Tech. Bul. 133 when combined with appropriate components.

Cleaning Code: W, BC

Lead Time

Fabric Disclaimer Monitors and display settings vary widely between computers. As a result, all fabric colors shown here are approximate and subject to variance from the actual color on physical chairs. For more accurate ideas of color tones, etc. please contact your favorite OM representative to obtain a sample or fabric swatch.

