



Bliss, 3900 Honeymoon



Bliss, 3900 Honeymoon

Content: 75% Repreve® Post Consumer Recycled Polyester; 25% Polyester

Width: 54"

Weight: 0.86 oz./linear yard

Backing: Acrylic

Finish: None

Repeat Length: 3.75"

Repeat Width: 7.5"

Directional: Yes

Railroaded: No

Abrasion: 170,000 Double Rubs

Breaking Strength: Warp

Crocking: Dry Class 4 / Wet Class 3

Lightfastness: 40 Hrs. - Grade 4

Flammability: California TB Bulletin 117-2013

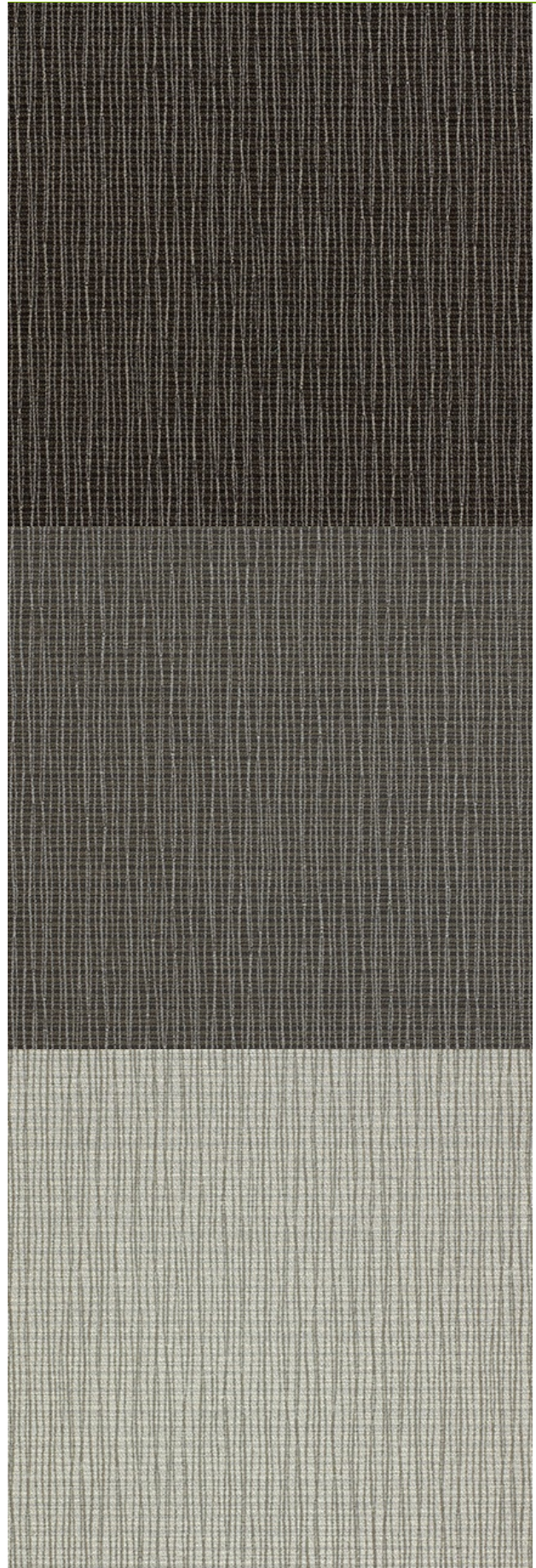
Cleaning Code: W

:

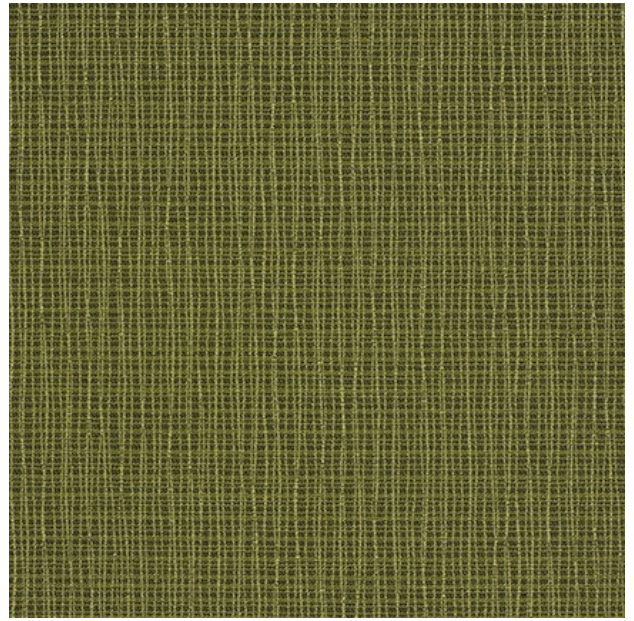
:

Lead Time

Fabric Disclaimer Monitors and display settings vary widely between computers. As a result, all fabric colors shown here are approximate and subject to variance from the actual color on physical chairs. For more accurate ideas of color tones, etc. please contact your favorite OM representative to obtain a sample or fabric swatch.







OM SEATING 1110 SOUTH MILDRED AVENUE, ONTARIO, CALIFORNIA 91761 OMSEATING.COM | 877.776.5678 | FAX 909.392.5678