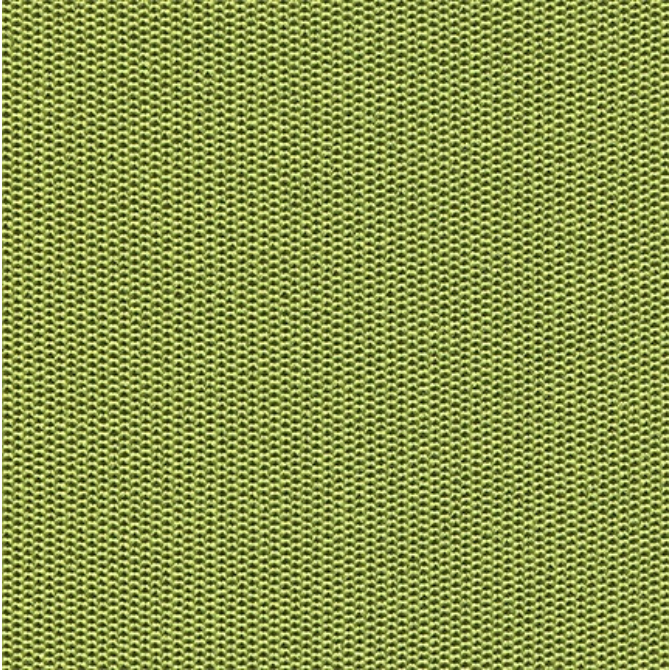




Myth, 5208 Medusa



Myth, 5208 Medusa

Content: 100% Polyester

Width: Manufactured to dimension specifications

Weight: 18.0 +/- 1.0 oz./square yard

Backing: None

Finish: None

Repeat: None

Directional: No

Abrasion: 250,000 Double Rubs

Breaking Strength: Warp 200 lbf. / Fill 150 lbf.

Pilling Resistance: Class 4

Crocking: Dry Grade 4 / Wet Grade 3

Lightfastness: 40 Hrs. - Grade 4

Flammability: Passes California TB 117-2013; NFPA 260, CLASS 1; UFAC, CLASS 1

Cleaning Code: WS

Lead Time

Fabric Disclaimer Monitors and display settings vary widely between computers. As a result, all fabric colors shown here are approximate and subject to variance from the actual color on physical chairs. For more accurate ideas of color tones, etc. please contact your favorite OM representative to obtain a sample or fabric swatch.

