



## Neighborhood Mesh, 5300 Echo Park

### Neighborhood Mesh - Affirm and Yes Series

**Content:** 88% Polyester, 12% Polypropylene

**Width:** Manufactured to dimension specifications

**Abrasion:** Exceeds 95,000 Double Rubs

**Breaking Strength:** Warp 150 lbf. / Fill 150 lbf.

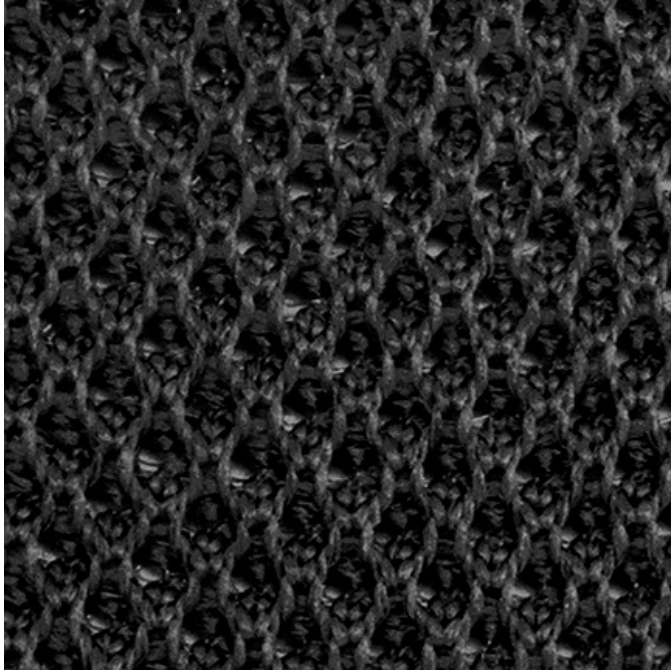
**Lightfastness:** 40 Hrs. - Grade 4

**Waterfastness:** Class 3 for staining / Class 4 for color change

**Crocking:** Dry Grade 4 / Wet Grade 3

**Flammability:** Passes California TB 117-2013; UFAC/NFPA 260 Class I

**Cleaning Code:** WS



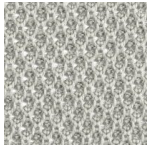
#### Fabric Disclaimer

Monitors and display settings vary widely between computers. As a result, all fabric colors shown here are approximate and subject to variance from the actual color on physical chairs. For more accurate ideas of color tones, etc. please contact your favorite OM representative to obtain a sample or fabric swatch.

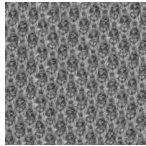
#### In Stock



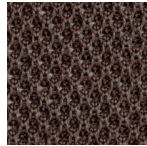
5300  
Echo Park



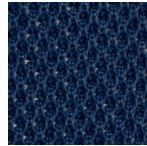
5301  
Sawtelle



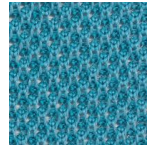
5302  
Silver Lake



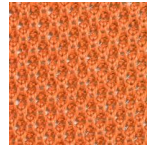
5303  
Topanga



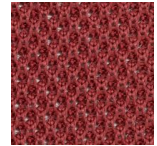
5304  
Palisades



5305  
Malibu



5306  
Del Ray



5307  
Sunset Junction



5308  
Joshua Tree