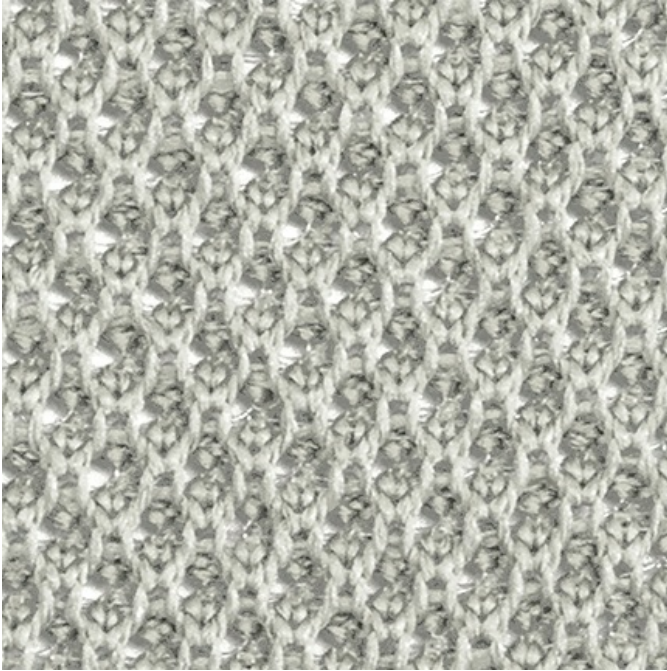




Neighborhood Mesh, 5301 Sawtelle



Neighborhood Mesh, 5301 Sawtelle

Content: 88% Polyester, 12% Polypropylene

Width: Manufactured to dimension specifications

Abrasion: Exceeds 95,000 Double Rubs

Breaking Strength: Warp 150 lbs. / Fill 150 lbs.

Lightfastness: 40 Hrs. - Grade 4

Waterfastness: Class 3 for staining / Class 4 for color change

Crocking: Dry Grade 4 / Wet Grade 3

Flammability: Passes California TB 117-2013; UFAC/NFPA 260 Class I

Cleaning Code: WS

Lead Time

Fabric Disclaimer Monitors and display settings vary widely between computers. As a result, all fabric colors shown here are approximate and subject to variance from the actual color on physical chairs. For more accurate ideas of color tones, etc. please contact your favorite OM representative to obtain a sample or fabric swatch.

