

Neighborhood Mesh, 5302 Silver Lake

Neighborhood Mesh - Affirm and Yes Series

Content: 88% Polyester, 12% Polypropylene

Width: Manufactured to dimension specifications

Abrasion: Exceeds 95,000 Double Rubs

Breaking Strength: Warp 150 lbf. / Fill 150 lbf.

Lightfastness: 40 Hrs. - Grade 4

Waterfastness: Class 3 for staining / Class 4 for color change

Crocking: Dry Grade 4 / Wet Grade 3

Flammability: Passes California TB 117-2013; UFAC/NFPA 260 Class I

Cleaning Code: WS

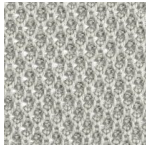
Fabric Disclaimer

Monitors and display settings vary widely between computers. As a result, all fabric colors shown here are approximate and subject to variance from the actual color on physical chairs. For more accurate ideas of color tones, etc. please contact your favorite OM representative to obtain a sample or fabric swatch.

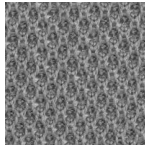
In Stock



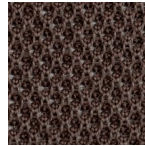
5300
Echo Park



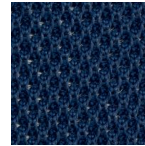
5301
Sawtelle



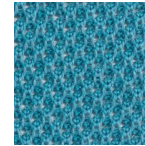
5302
Silver Lake



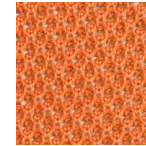
5303
Topanga



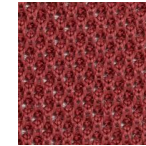
5304
Palisades



5305
Malibu



5306
Del Ray



5307
Sunset Junction



5308
Joshua Tree