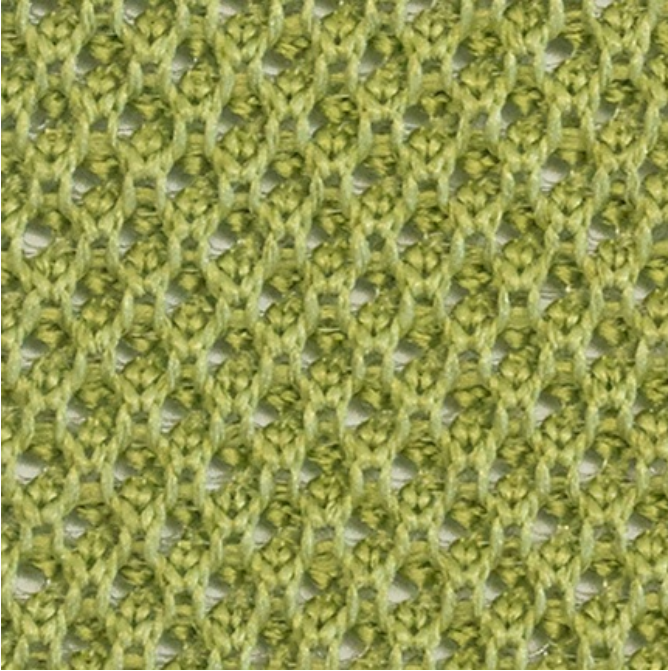




## Neighborhood Mesh, 5308 Joshua Tree



Neighborhood Mesh, 5308 Joshua Tree

**Content:** 88% Polyester, 12% Polypropylene

**Width:** Manufactured to dimension specifications

**Abrasion:** Exceeds 95,000 Double Rubs

**Breaking Strength:** Warp 150 lbf. / Fill 150 lbf.

**Lightfastness:** 40 Hrs. - Grade 4

**Waterfastness:** Class 3 for staining / Class 4 for color change

**Crocking:** Dry Grade 4 / Wet Grade 3

**Flammability:** Passes California TB 117-2013; UFAC/NFPA 260 Class I

**Cleaning Code:** WS

---

### Lead Time

**Fabric Disclaimer** Monitors and display settings vary widely between computers. As a result, all fabric colors shown here are approximate and subject to variance from the actual color on physical chairs. For more accurate ideas of color tones, etc. please contact your favorite OM representative to obtain a sample or fabric swatch.

