



## Comfortknit Solids, 5502 Monarch



Comfortknit Solids, 5502 Monarch

**Content:** 100% Repreve PC Polyester

**Width:** Manufactured to dimension specifications

**Weight:** 16 oz./square yard

**Backing:** None

**Finish:** None

**Repeat:** None

**Directional:** Yes

**Railroaded:** No

**Abrasion:** Exceeds 250,000 Double Rubs

**Breaking Strength:** Warp 209.4 lbf. / Fill 251.6 lbf.

**Pilling Resistance:** Class 4

**Crocking:** Dry 1 / Wet 1

**Lightfastness:** 40 Hrs. - 1

**Waterfastness:** Class 5 for staining / Class 5 for shade color

**Flammability:** Passes California TB 117-2013; NFPA 260, CLASS 1; UFAC, CLASS 1

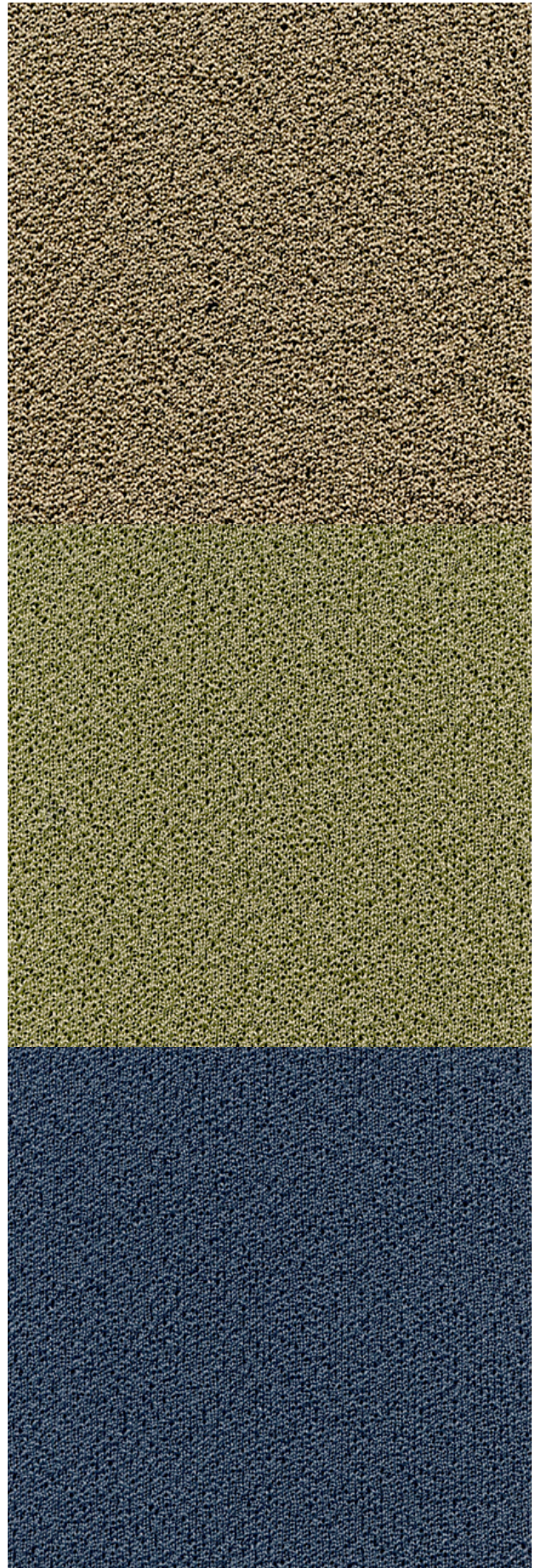
**Cleaning Code:** W

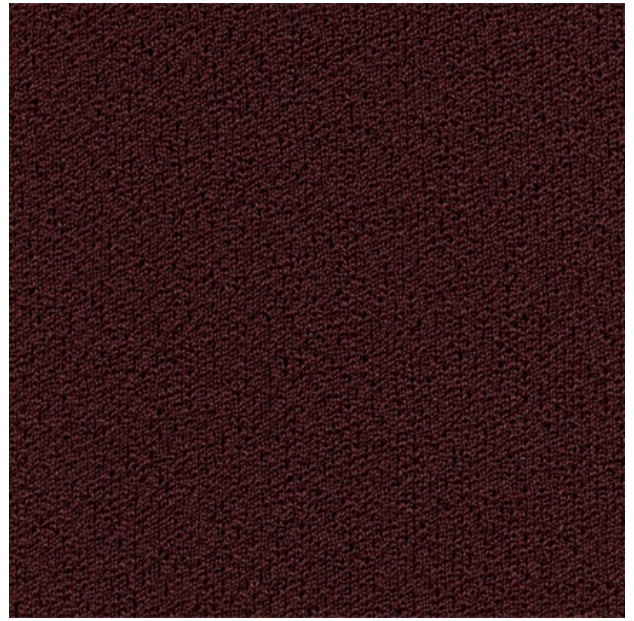
---

### Lead Time

**Fabric Disclaimer** Monitors and display settings vary widely between computers. As a result, all fabric colors shown here are approximate and subject to variance from the actual color on physical chairs. For more accurate ideas of color tones, etc. please contact your favorite OM representative to obtain a sample or fabric swatch.







**OM SEATING** 1110 SOUTH MILDRED AVENUE, ONTARIO, CALIFORNIA 91761 [OMSEATING.COM](http://OMSEATING.COM) | 877.776.5678 | FAX 909.392.5678