



Comfortknit Solids, 5512 Xanadu Grade 5

Content: 100% Repreve PC Polyester

Width: Manufactured to dimension specifications

Weight: 16 oz./square yard

Backing: None

Finish: None

Repeat: None

Directional: Yes

Railroaded: No

Abrasion: Exceeds 250,000 Double Rubs

Breaking Strength: Warp 209.4 lbf. / Fill 251.6 lbf.

Pilling Resistance: Class 4

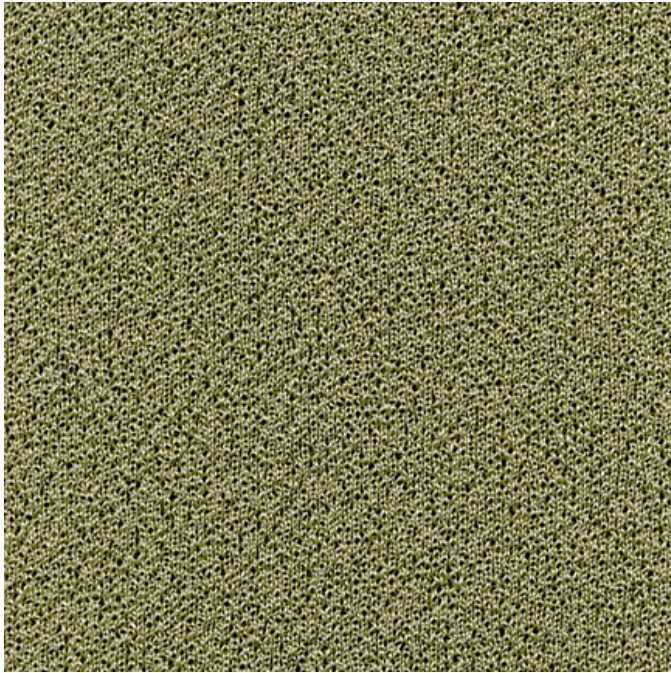
Crocking: Dry 1 / Wet 1

Lightfastness: 40 Hrs. - 1

Waterfastness: Class 5 for staining / Class 5 for shade color

Flammability: Passes California TB 117-2013; NFPA 260, CLASS 1; UFAC, CLASS 1

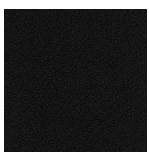
Cleaning Code: W



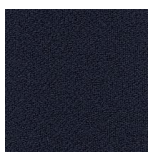
Fabric Disclaimer

Monitors and display settings vary widely between computers. As a result, all fabric colors shown here are approximate and subject to variance from the actual color on physical chairs. For more accurate ideas of color tones, etc. please contact your favorite OM representative to obtain a sample or fabric swatch.

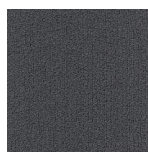
In Stock



5501
Flint



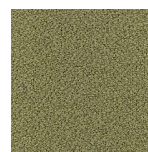
5502
Monarch



5503
Smoke



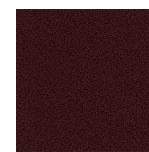
5506
Cappuccino



5512
Xanadu



5515
Baltic



5539
Wine