



# Werksey® Quilt Collection, Q107

## Werksey Quilt Collection

**Content:** 100% Polyester

**Width:** Manufactured to dimension specifications

**Weight:** 36 oz./square yard

**Backing:** None

**Finish:** None

**Directional:** Yes

**Railroaded:** No

**Abrasion:** Exceeds 250,000 Double Rubs

**Breaking Strength:** Warp 950 lbf. / Fill 1175 lbf.

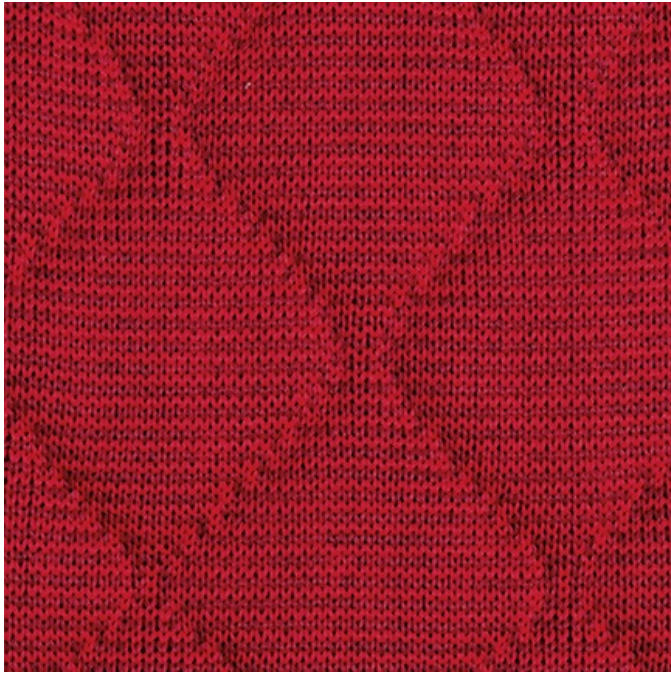
**Pilling Resistance:** Class 4 min.

**Crocking:** Dry 4 min. / Wet 3 min.

**Lightfastness:** 40 Hrs. - 4 min.

**Flammability:** Passes California TB 117-2013, Section 1; NFPA 260-2013

**Cleaning Code:** WS



### Fabric Disclaimer

Monitors and display settings vary widely between computers. As a result, all fabric colors shown here are approximate and subject to variance from the actual color on physical chairs. For more accurate ideas of color tones, etc. please contact your favorite OM representative to obtain a sample or fabric swatch.

### In Stock



Q109  
Vineyard



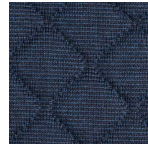
Q100  
Raven



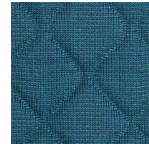
Q101  
Stone Pine



Q102  
DeerBrook

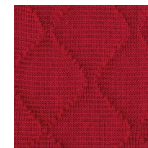


Q104  
Laluna

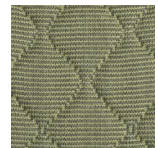


Q105  
Lake Breeze

### Designer Colors - Additional Lead Time Applies



Q107  
Apple Orchard



Q108  
Palmetto



Q114  
Haven



Q118  
Bermuda



Q103  
Sunny Grove



Q106  
Marigold