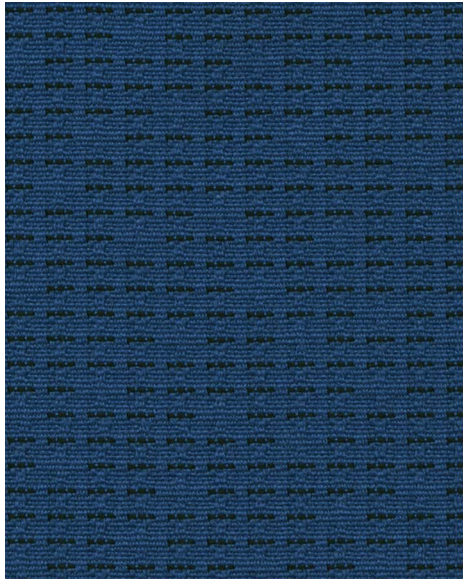


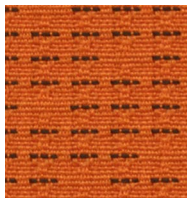
drift



apex 2704



inertia 2709



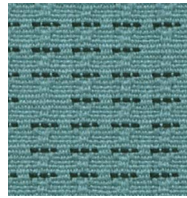
ember 2706



feint 2702



redline 2707



shift 2705

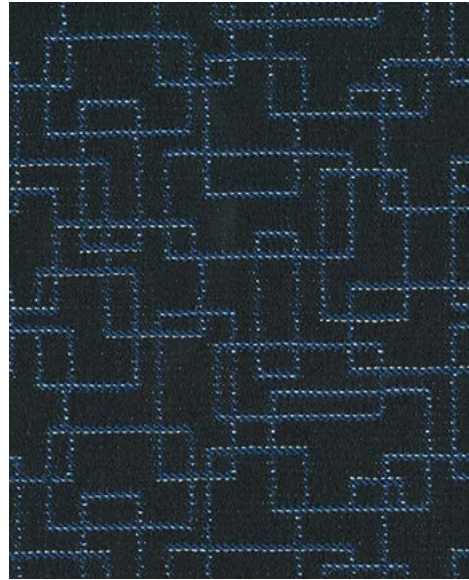


clutch 2701



traction 2700

track



daytona 2714



limerock 2718



thunderhill 2716



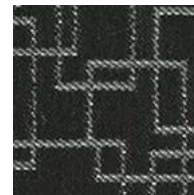
silverstone 2712



suzuka 2717



monza 2713



willow springs 2710



drift | track

drift

Content: 94% post-consumer recycled polyester 6% pre-consumer recycled polyester Width: 54" Weight: 11.1 ± 1.0 oz./linear yard Backing: None Finish: None Repeat: 2.5" vertical 12.25" horizontal Directional: Yes Railroaded: No	PERFORMANCE Surface Abrasion: Breaking Strength: Seam Slippage: Pilling Resistance: Colorfastness to Crocking: Colorfastness to Light:	Test method ASTM-D-4157 ASTM-D-5034 ASTM-D-4034 ASTM-D-3511 AATCC 8 AATCC 16.3 Option 3	Results 100,000 Double Rubs Warp: 290 lbs. / Fill: 250 lbs. Warp: 110 lbs. / Fill: 75 lbs. Class 4 min Dry: Grade 4 min. / Wet: Grade 3 min. Grade 4 min. at 40 hours
Flammability* CA Technical Bulletin 117-2013 Section 1 Passes	Cleaning Code: Cleaning Information: Cleaning Code: Cleaning Information:	WS: (Water/Solvent Cleaner) <ul style="list-style-type: none"> Clean with water based cleaning agents, foam or pure, water free solvents. Vacuuming or light brushing is recommended to prevent dust and soil buildup. BC: (Bleach Cleanable) <ul style="list-style-type: none"> May be cleaned with a 10% bleach-to-water solution. Rinse well after cleaning with a clean damp cloth. 	

track

Content: 100% Polyester Width: 54" Weight: 13.3 oz. / lin.yd. Backing: Synthetic latex blend Finish: i-clean, a high performance stain and moisture repellent, based on Nano technology. Repeat: 3.5" horizontal / 3.25" vertical Directional: Yes Railroaded: No	PERFORMANCE Surface Abrasion: Breaking Strength: Seam Slippage: Pilling Resistance: Colorfastness to Crocking: Colorfastness to Light:	Test method ASTM-D-4157 ASTM-D-5034 ASTM-D-4034 ASTM-D-3511 ASTM D3597, AATCC 8 AATCC16A	Results 40,000 Double Rubs Warp: 203 lbs. / Weft: 218 lbs. Warp: 56 lbs. / Weft: 102 lbs. Class 4 Dry: Class 4 / Wet: Class 3 40 hrs min. - Class 4
Flammability* California TB 117-2013 Passes UFAC Class 1 Passes NFPA 260 class 1 Passes	Cleaning Code: Cleaning Information:	W (Water) <ul style="list-style-type: none"> Spot clean only with water based upholstery shampoo or foam upholstery cleaner. Pretest a small, inconspicuous area before proceeding. Evenly clean the entire panel in a seam to seam fashion. 	

*This term and any corresponding data refer to typical performance in the tests indicated and should not be construed to imply the behavior of this or any other material under actual fire conditions.

Multiple factors affect fabric durability and appearance retention, including end-use application and proper maintenance. Wyzenbeek results above 100,000 double rubs have not been shown to be a reliable indicator of increased fabric lifespan.

Additional Notes

Individual samples available. Please send requests to samples@omseating.com
Manufacturers will always attempt to ship to a satisfactory commercial match. Because of industry standard dye lot variation, colors may not match exactly. Specifications are correct at time of printing and are subject to change without notification. Additional specifications may be available by contacting OM.

Visit www.omseating.com for more information about ergonomics and the design of om | seating.

