

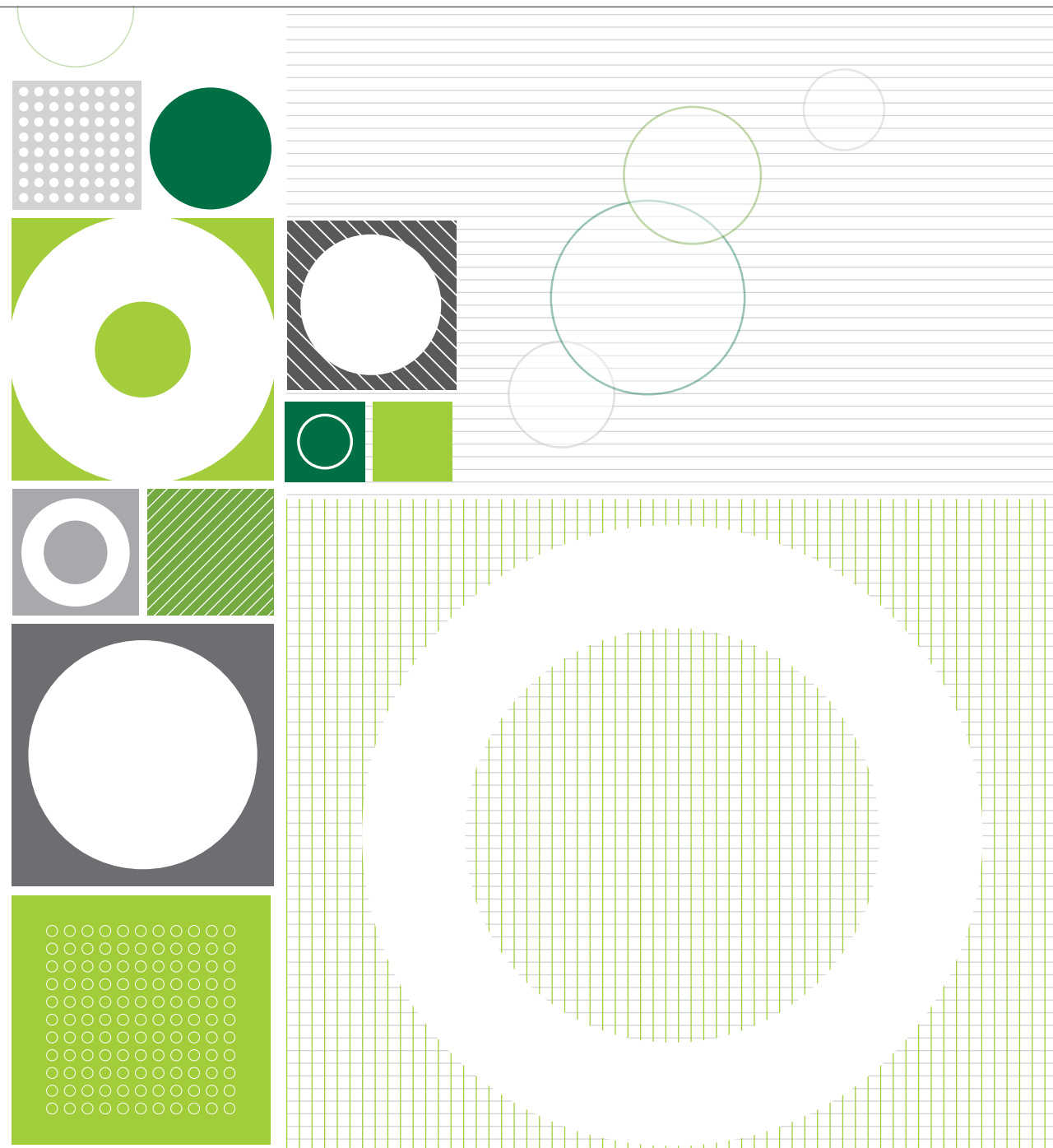
om commercial-contract basics in-stock

om commercial-contract basics in-stock



basic | celestial | spice | type

basic | celestial | spice | type



basic

Content: 100% Marquesa® Lana	PERFORMANCE	TEST METHOD	RESULTS
Width: 54"	Surface Abrasion: ASTM D-4157 (Wire Screen)		250,000 Double Rubs
Weight: 16.0 oz./linear yard	Breaking Strength: ASTM D-5034		Warp: 300 lbs / Fill: 300 lbs
Backing: Acrylic	Seam Slippage: ASTM D-4034		Warp: 91.3 lbs / Fill: 95 lbs
Finish: Teflon®	Colorfastness to Crocking: AATCC 8		Dry: Class 5 / Wet: Class 5
Repeat: None	Colorfastness to Light: AATCC 16E		400 hrs. - Class 5
Directional: No			
Railroaded: No			

Flammability*		Cleaning Code:	WS (Water/Solvent Cleaner)
California TB 117-2013, Section 1	Passes	Cleaning Instructions:	<ul style="list-style-type: none"> For water based stains, use mild detergent foam or upholstery shampoo. For oil based stains, spot clean with a dry cleaning solvent. Always test an area first
CS-191-53, Class 1	Passes		
BIFMA X5.7-1991	Passes		
NFPA 260 (Equivalent to UFAC) Class 1	Passes		

celestial

Content: 100% Polyester	PERFORMANCE	TEST METHOD	RESULTS
Width: 54"	Surface Abrasion: ASTM D-4157 (Wyzenbeek)		Passes 183,000 Double Rubs
Weight: 14.2 oz./linear yard	Breaking Strength: ASTM-D-5034		Warp: 395.2 lbs. / Fill: 298 lbs.
Backing: Acrylic	Seam Slippage: ASTM-D-4034		Warp: 81 lbs. / Fill: 70 lbs.
Finish: Stain Repellent	Colorfastness to Crocking: AATCC 8		Dry: Class 4 min / Wet: Class 4
Repeat: None	Colorfastness to Light: AATCC-16		40 hours - Class 4
Directional: No			
Railroaded: No			

Flammability*		Cleaning Code:	WS (Water/Solvent Cleaner)
California TB 117-2013	Passes	Cleaning Instructions:	<ul style="list-style-type: none"> Spot clean, using a mild water-free solvent or dry cleaning product. Clean only in a well-ventilated room and avoid any product containing carbon tetrachloride or other toxic materials. Pretest a small area before proceeding. Always rinse promptly with clean water.
NFPA 260 (Equivalent to UFAC)	Passes		
ASTM E84 (Adhered) Class 2 or B	Passes		

spice

Content: 100% Recycled Polyester	PERFORMANCE	TEST METHOD	RESULTS
Width: 54"	Surface Abrasion: ASTM-D-4157 (Wyzenbeek)		400,000 Double Rubs
Weight: 11.5 oz./linear yard	Breaking Strength: ASTM-D-5034		Warp: 300 lbs / Fill: 220.0 lbs.
Backing: Acrylic	Seam Slippage: ASTM-D-4034		Warp: 87.0 lbs / Fill: 87.0 lbs.
Finish: Teflon®	Colorfastness to Crocking: AATCC 8		Dry: Class 5 / Wet: Class 5
Repeat: None	Colorfastness to Light: AATCC 16E		60 hours - class 5
Directional: No			
Railroaded: No			

Flammability*		Cleaning Code:	WS (Water/Solvent Cleaner)
California TB 117-2013, Section 1	Passes	Cleaning Instructions:	<ul style="list-style-type: none"> For water based stains, use mild detergent foam or upholstery shampoo. For oil based stains, spot clean with a dry cleaning solvent. Always test an area first.
CS-191-53, Class 1	Passes		
BIFMA X5.7-1991	Passes		
NFPA 260 (Equivalent to UFAC), Class 1	Passes		

type

Content: 90% polyester, 6% pre-consumer recycled polyester, 4% post-consumer recycled polyester	PERFORMANCE	TEST METHOD	RESULTS
Width: 54"	Surface Abrasion: ASTM D4157 (Cotton Duck)		100,000 Double Rubs
Weight: 12.9 ± 1.0 oz./lin. yard	Breaking Strength: ASTM D5034		Warp: 200 lbs. / Fill: 155 lbs.
Backing: Acrylic	Seam Slippage: ASTM D4034		Warp: 100 lbs. / Fill: 45 lbs
Finish: Stain Repellent	Colorfastness to Crocking: AATCC 8		Dry: Grade 4 min. / Wet: Grade 3 min.
Repeat: 1.5" vertical 2" horizontal	Colorfastness to Light: AATCC 16 Option 3		Grade 4 min. at 40 hours
Directional: yes			
Railroaded: no			

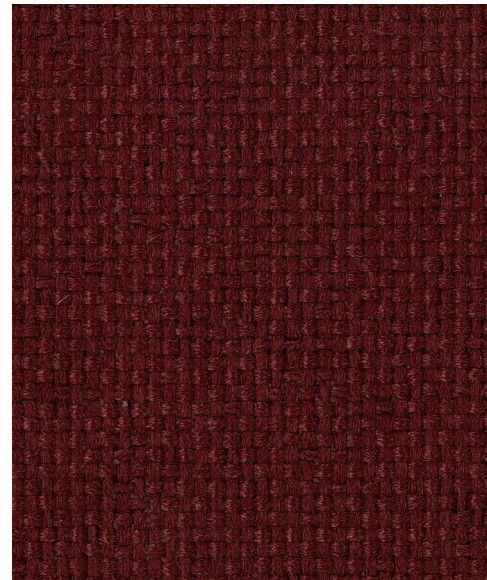
Flammability*		Cleaning Code:	WS (Water/Solvent Cleaner)
California TB 117-2013, Section 1	Passes	Cleaning Instructions:	<ul style="list-style-type: none"> Clean with water based cleaning agents, foam or pure, water free solvents. Vacuuming or light brushing is recommended to prevent dust and soil buildup.
NFPA 260 (Equivalent to UFAC)	Passes		

Additional Notes: Individual samples available. Manufacturers will always attempt to ship to a satisfactory commercial match. Because of industry standard dye lot variation, colors may not match exactly. Specifications are correct at time of printing and are subject to change without notification. Additional specifications may be available by contacting OM.

*This term and any corresponding data refer to typical performance in the tests indicated and should not be construed to imply the behavior of this or any other material under actual fire conditions.

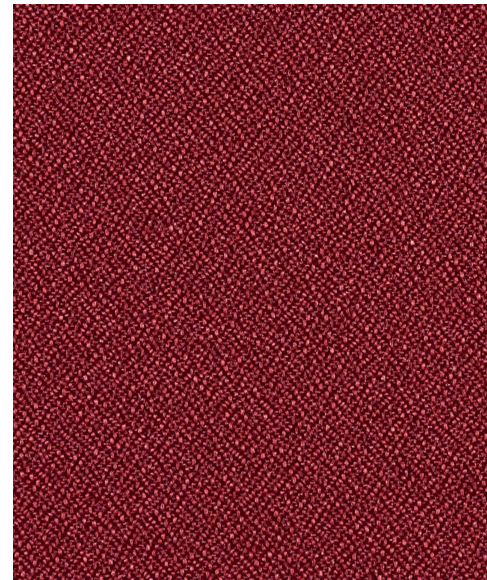
Visit www.omseating.com for more information about ergonomics and the design of omseating.

basic



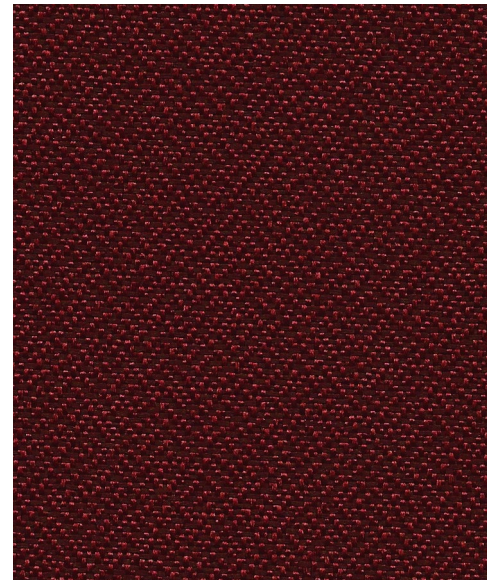
burgundy 1013

celestial



hyperion 1207

spice

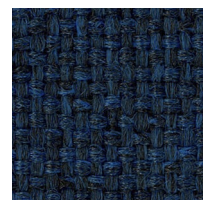


paprika 1167

type



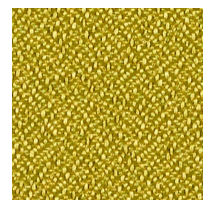
fairy 1307



blue 1005



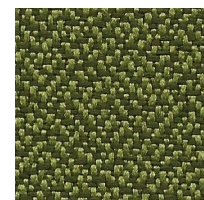
gray 1002



europa 1208



callisto 1203



mint 1168



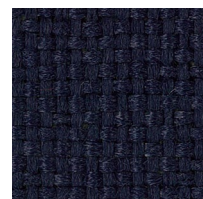
sesame 1166



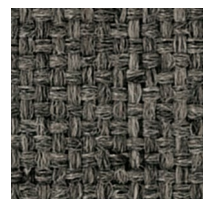
leaf 1308



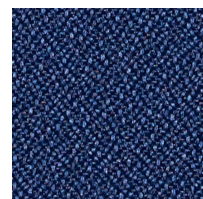
electric 1306



navy 1004



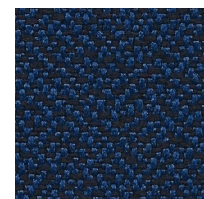
charcoal 1001



titan 1204



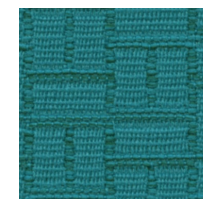
rhea 1201



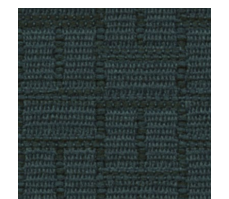
juniper 1164



nutmeg 1163



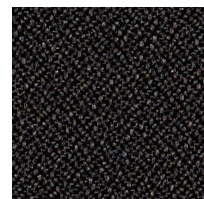
ice 1305



aqua 1304



black 1020



oberon 1200



pepper 1161



steel 1301



obsidian 1300