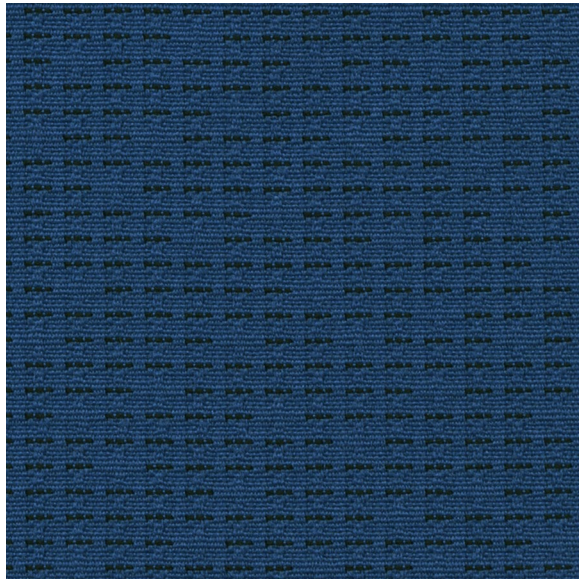
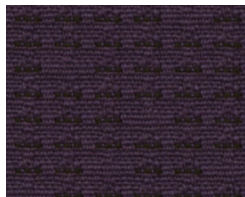


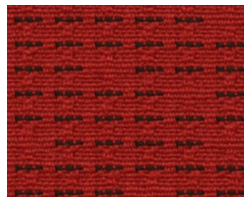
drift



apex 2704



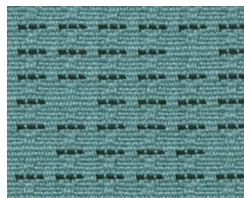
inertia 2709



redline 2707



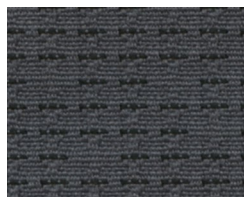
ember 2706



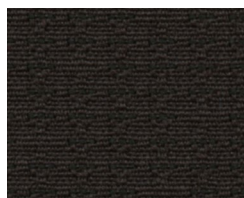
shift 2705



feint 2702

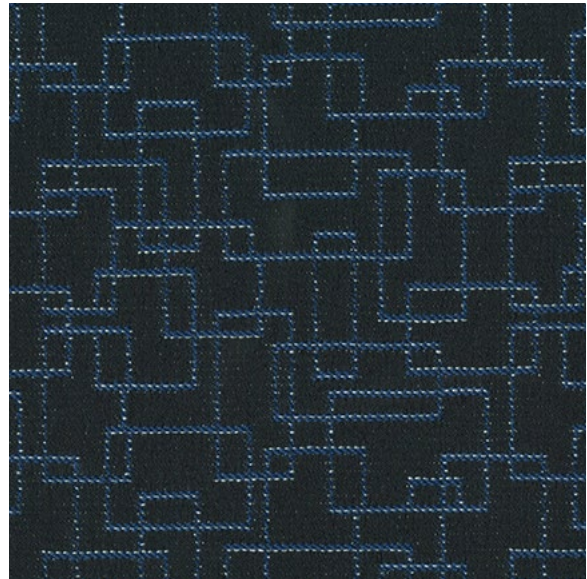


clutch 2701



traction 2700

track



daytona 2714



limerock 2718



suzuka 2717



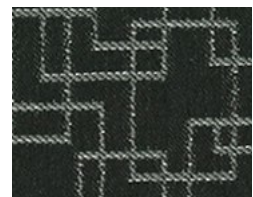
thunderhill 2716



monza 2713



silverstone 2712



willow springs 2710

drift

<p>Content: 94% post-consumer recycled polyester 6% pre-consumer recycled polyester</p> <p>Width: 54"</p> <p>Weight: 11.1 ± 1.0 oz./linear yard</p> <p>Backing: None</p> <p>Finish: None</p> <p>Repeat: 2.5" vertical 12.25" horizontal</p> <p>Directional: Yes</p> <p>Railroaded: No</p>	<p>PERFORMANCE</p> <p>Surface Abrasion:</p> <p>Breaking Strength:</p> <p>Seam Slippage:</p> <p>Pilling Resistance:</p> <p>Colorfastness to Crocking:</p> <p>Colorfastness to Light:</p>	<p>Test method</p> <p>ASTM-D-4157</p> <p>ASTM-D-5034</p> <p>ASTM-D-4034</p> <p>ASTM-D-3511</p> <p>AATCC 8</p> <p>AATCC 16.3 Option 3</p>	<p>Results</p> <p>100,000 Double Rubs</p> <p>Warp: 290 lbs. / Fill: 250 lbs.</p> <p>Warp: 110 lbs. / Fill: 75 lbs.</p> <p>Class 4 min</p> <p>Dry: Grade 4 min. / Wet: Grade 3 min.</p> <p>Grade 4 min. at 40 hours</p>
<p>Flammability*</p> <p>CA Technical Bulletin 117-2013 Section 1</p> <p style="text-align: right;">Passes</p>	<p>Cleaning Code:</p> <p>Cleaning Information:</p>	<p>WS: (Water/Solvent Cleaner)</p> <ul style="list-style-type: none"> • Clean with water based cleaning agents, foam or pure, water free solvents. • Vacuuming or light brushing is recommended to prevent dust and soil buildup. <p>BC: (Bleach Cleanable)</p> <ul style="list-style-type: none"> • May be cleaned with a 10% bleach-to-water solution. • Rinse well after cleaning with a clean damp cloth. 	

track

<p>Content: 100% Polyester</p> <p>Width: 54"</p> <p>Weight: 13.3 oz. / lin.yd.</p> <p>Backing: Synthetic latex blend</p> <p>Finish: i-clean, a high performance stain and moisture repellent, based on Nano technology.</p> <p>Repeat: 3.5" horizontal / 3.25" vertical</p> <p>Directional: Yes</p> <p>Railroaded: No</p>	<p>PERFORMANCE</p> <p>Surface Abrasion:</p> <p>Breaking Strength:</p> <p>Seam Slippage:</p> <p>Pilling Resistance:</p> <p>Colorfastness to Crocking:</p> <p>Colorfastness to Light:</p>	<p>Test method</p> <p>ASTM-D-4157</p> <p>ASTM-D-5034</p> <p>ASTM-D-4034</p> <p>ASTM-D-3511</p> <p>ASTM D3597, AATCC 8</p> <p>AATCC16A</p>	<p>Results</p> <p>40,000 Double Rubs</p> <p>Warp: 163 lbs. / Weft: 254 lbs.</p> <p>Warp: 79 lbs. / Weft: 72 lbs.</p> <p>Class 4</p> <p>Dry: Class 4 / Wet: Class 3</p> <p>40 hrs min. – Class 4</p>
<p>Flammability*</p> <p>California TB 117-2013</p> <p>UFAC Class 1</p> <p>NFPA 260 class 1</p> <p style="text-align: right;">Passes Passes Passes</p>	<p>Cleaning Code:</p> <p>Cleaning Information:</p>	<p>W (Water)</p> <ul style="list-style-type: none"> • Spot clean only with water based upholstery shampoo or foam upholstery cleaner. • Pretest a small, inconspicuous area before proceeding. • Evenly clean the entire panel in a seam to seam fashion. 	

*This term and any corresponding data refer to typical performance in the tests indicated and should not be construed to imply the behavior of this or any other material under actual fire conditions.

Multiple factors affect fabric durability and appearance retention, including end-use application and proper maintenance. Wyzenbeek results above 100,000 double rubs have not been shown to be a reliable indicator of increased fabric lifespan.

Additional Notes

Individual samples available. Please send requests to samples@omseating.com
Manufacturers will always attempt to ship to a satisfactory commercial match. Because of industry standard dye lot variation, colors may not match exactly. Specifications are correct at time of printing and are subject to change without notification. Additional specifications may be available by contacting OM.

Visit www.omseating.com for more information about ergonomics and the design of om | smart seating.

