

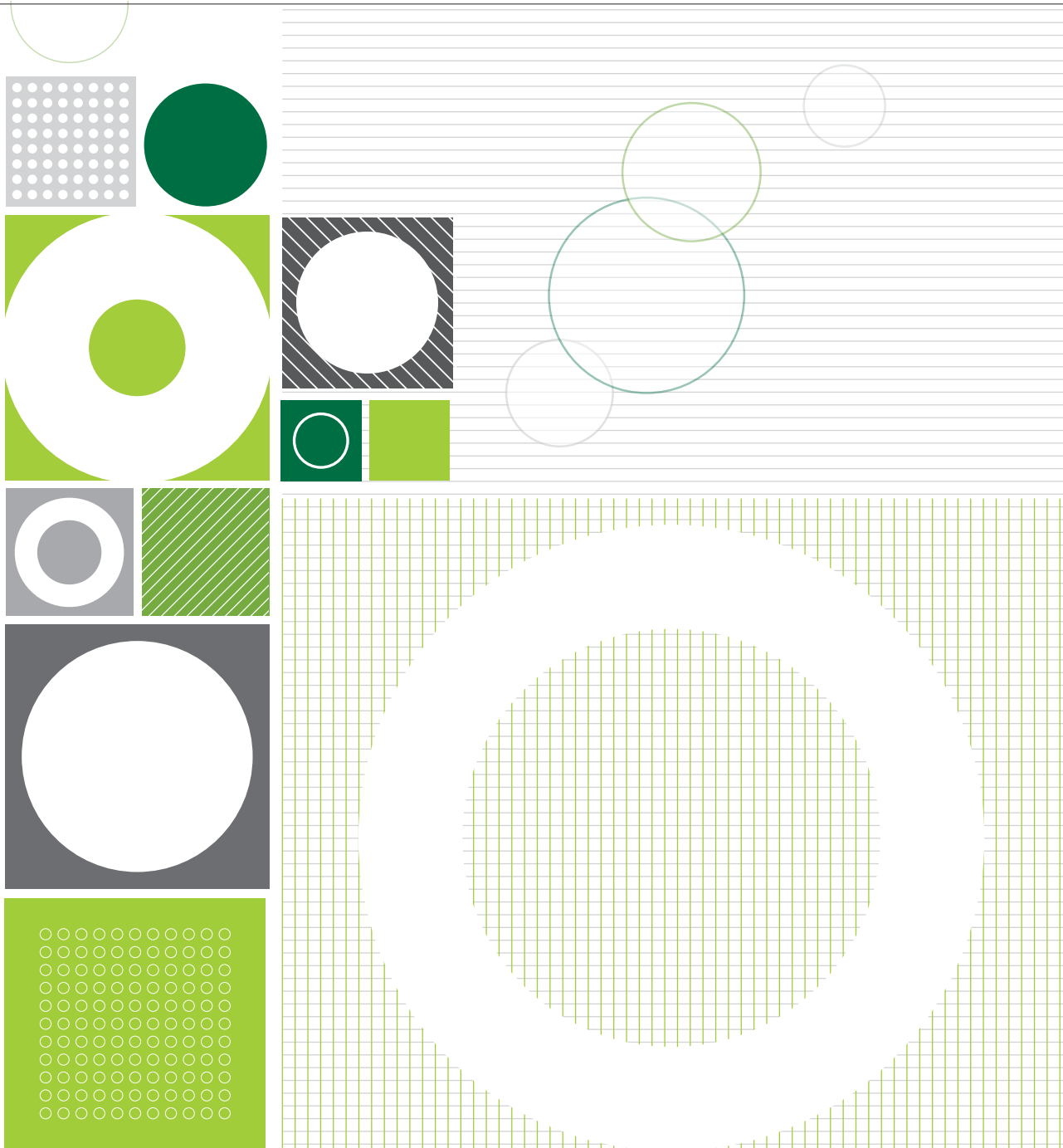
**om** | crush collection in-stock

**om** | crush collection in-stock



beau | xox | bliss

beau | xox | bliss



beau

**Content:** 70% Polypropylene, 30% Polyester  
**Width:** 54"  
**Weight:** 16.04 oz./linear yard  
**Backing:** Latex  
**Finish:** Stain Repellent  
**Repeat:** None  
**Directional:** Yes  
**Railroaded:** No

PERFORMANCE	TEST METHOD	RESULTS
<b>Surface Abrasion:</b>	ASTM D-4157 (Wyzenbeek)	Exceeds 100,000 Double Rubs
<b>Breaking Strength:</b>	ASTM D-5034	Warp: 214 lbs / Fill: 450 lbs
<b>Seam Slippage:</b>	ASTM D-4034	Warp: 50 lbs / Fill: 80 lbs
<b>Colorfastness to Crocking:</b>	AATCC 8	Dry: Class 4 / Wet: Class 4
<b>Colorfastness to Light:</b>	AATCC 16.3 Option 3	40 hrs. - Grade 5

Reduced Environmental Impact: GREENGUARD Gold Certified

**Flammability\***  
 Passes Cal 117-2013; NFPA 260/UFAC Class 1;  
 May comply with Cal. Tech. Bul. 133 when combined with appropriate components.

Cleaning Code:	W (Water-Based Cleaner)
<b>Cleaning Instructions:</b>	<ul style="list-style-type: none"> <li>Spot clean, using the foam only from a water-based cleaning agent, such as a mild detergent or non-solvent upholstery shampoo product.</li> <li>Apply foam with a soft brush in a circular motion. Always rinse promptly with clean water.</li> <li>Pretest small area before proceeding.</li> </ul>

Cleaning Code:	BC (Bleach Cleanable)
<b>Cleaning Instructions:</b>	<ul style="list-style-type: none"> <li>1 part bleach, 9 parts water = 10% bleach, 90% water solution</li> <li>Do not clean/disinfect fabric for longer than 10 minutes using the 10% bleach solution.</li> <li>Always rinse promptly with clean water after applying the bleach solution.</li> <li>Failure to do so will void any and all warranties.</li> </ul>

bliss

**Content:** 75% Repreve® Post Consumer Recycled Polyester; 25% Polyester  
**Width:** 54"  
**Weight:** 0.86 oz./linear yard  
**Backing:** Acrylic  
**Finish:** None  
**Repeat:** 3.75" vertical / 7.5" horizontal  
**Directional:** Yes  
**Railroaded:** No

PERFORMANCE	TEST METHOD	RESULTS
<b>Surface Abrasion:</b>	ASTM-D-4157 (Wyzenbeek)	170,000 Double Rubs
<b>Breaking Strength:</b>	ASTM-D-5034	Warp: 50 lbs / Fill: 50.0 lbs.
<b>Seam Slippage:</b>	ASTM-D-4034	Warp: 25.0 lbs / Fill: 25.0 lbs.
<b>Colorfastness to Crocking:</b>	AATCC 8	Dry: Class 4 min / Wet: Class 3 min
<b>Colorfastness to Light:</b>	AATCC 16.3 Option 3	40 hours - Grade 5 min

Reduced Environmental Impact: Recycled Fiber Content; GREENGUARD Gold Certified; SF 336 Compliant

**Flammability\***  
 California TB Bulletin 117-2013 Passes  
 UFAC Class 1 Passes  
 NFPA 260 Class 1 Passes

Cleaning Code:	W (Water Based Foam or Cleaner)
<b>Cleaning Instructions:</b>	<ul style="list-style-type: none"> <li>Clean with water based foam or cleaner</li> <li>Do not saturate with liquids</li> <li>Do not get the furniture wet</li> <li>Do not use dry cleaning solvents</li> </ul>

XOX

**Content:** 100% Polyester  
**Width:** 54"  
**Weight:** 17.27 oz./linear yard  
**Backing:** Acrylic  
**Finish:** Stain Repellent-PFOA & PFOS free  
**Repeat:** 4.8" vertical / 4.8" horizontal  
**Directional:** Yes  
**Railroaded:** No

PERFORMANCE	TEST METHOD	RESULTS
<b>Surface Abrasion:</b>	ASTM D-4157 (Wyzenbeek)	Passes 80,000 Double Rubs
<b>Breaking Strength:</b>	ASTM-D-5034	Warp: 246 lbs. / Fill: 282 lbs.
<b>Seam Slippage:</b>	ASTM-D-4034	Warp: 96 lbs. / Fill: 84 lbs.
<b>Colorfastness to Crocking:</b>	AATCC 8	Dry: Class 4 min / Wet: Class 4
<b>Colorfastness to Light:</b>	AATCC-16.3 Option 3	40 hours - Grade 5

Cleaning Code:	S (Solvent Cleaner)
<b>Cleaning Instructions:</b>	<ul style="list-style-type: none"> <li>Spot clean, using a mild water-free solvent or dry cleaning product.</li> <li>Avoid any product containing carbon tetrachloride or other toxic materials.</li> <li>Pretest a small area before proceeding. Always rinse promptly with clean water.</li> </ul>

**Additional Notes:** Individual samples available. Manufacturers will always attempt to ship to a satisfactory commercial match. Because of industry standard dye lot variation, colors may not match exactly. Specifications are correct at time of printing and are subject to change without notification. Additional specifications may be available by contacting OM.

\*This term and any corresponding data refer to typical performance in the tests indicated and should not be construed to imply the behavior of this or any other material under actual fire conditions.

Visit [www.omseating.com](http://www.omseating.com) for more information about ergonomics and the design of omseating.

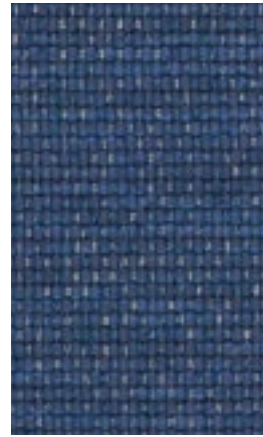


om | crush collection in-stock

om | crush collection in-stock



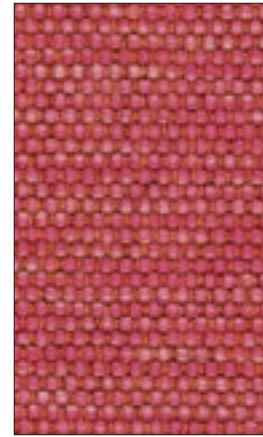
XOX soulmate 3704



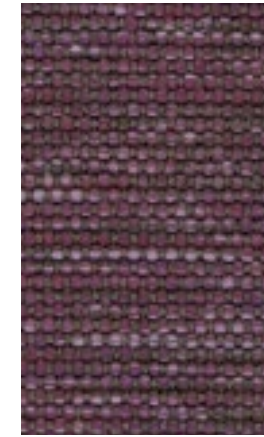
beau bubs 3804



beau deary 3802



beau sweetie 3810



beau cutie 3809



XOX hearts 3709



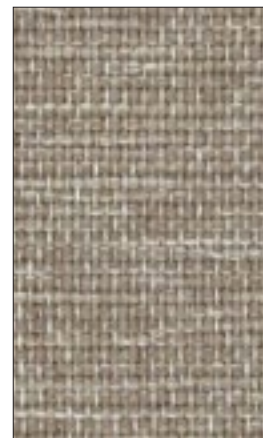
bliss proposal 3904



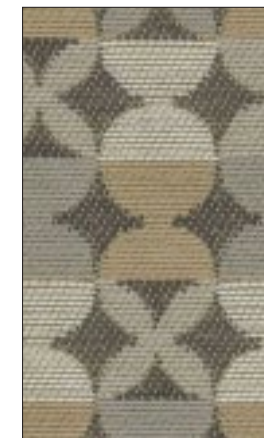
bliss garter 3905



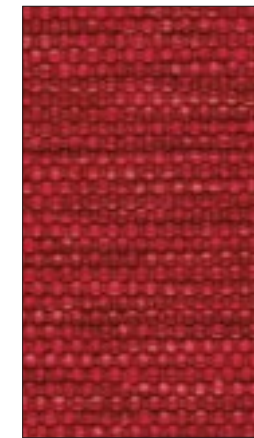
XOX crush 3708



beau cupcake 3806



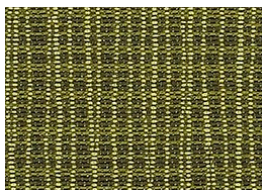
XOX mine 3706



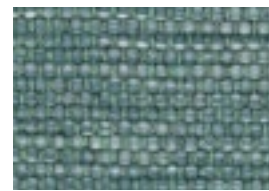
beau amore 3807



XOX cupid 3707



bliss bouquet 3908



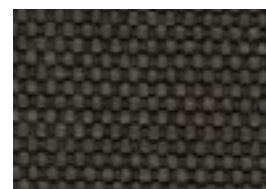
beau darling 3808



XOX forever 3703



bliss honeymoon 3900



beau bae 3800



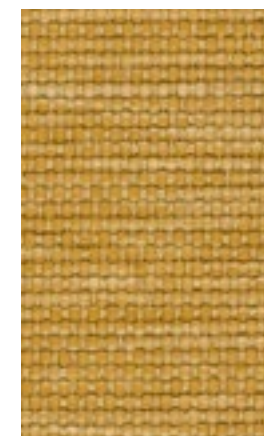
bliss toast 3906



bliss vows 3901



bliss veil 3902



beau honey 3803



XOX roses 3702