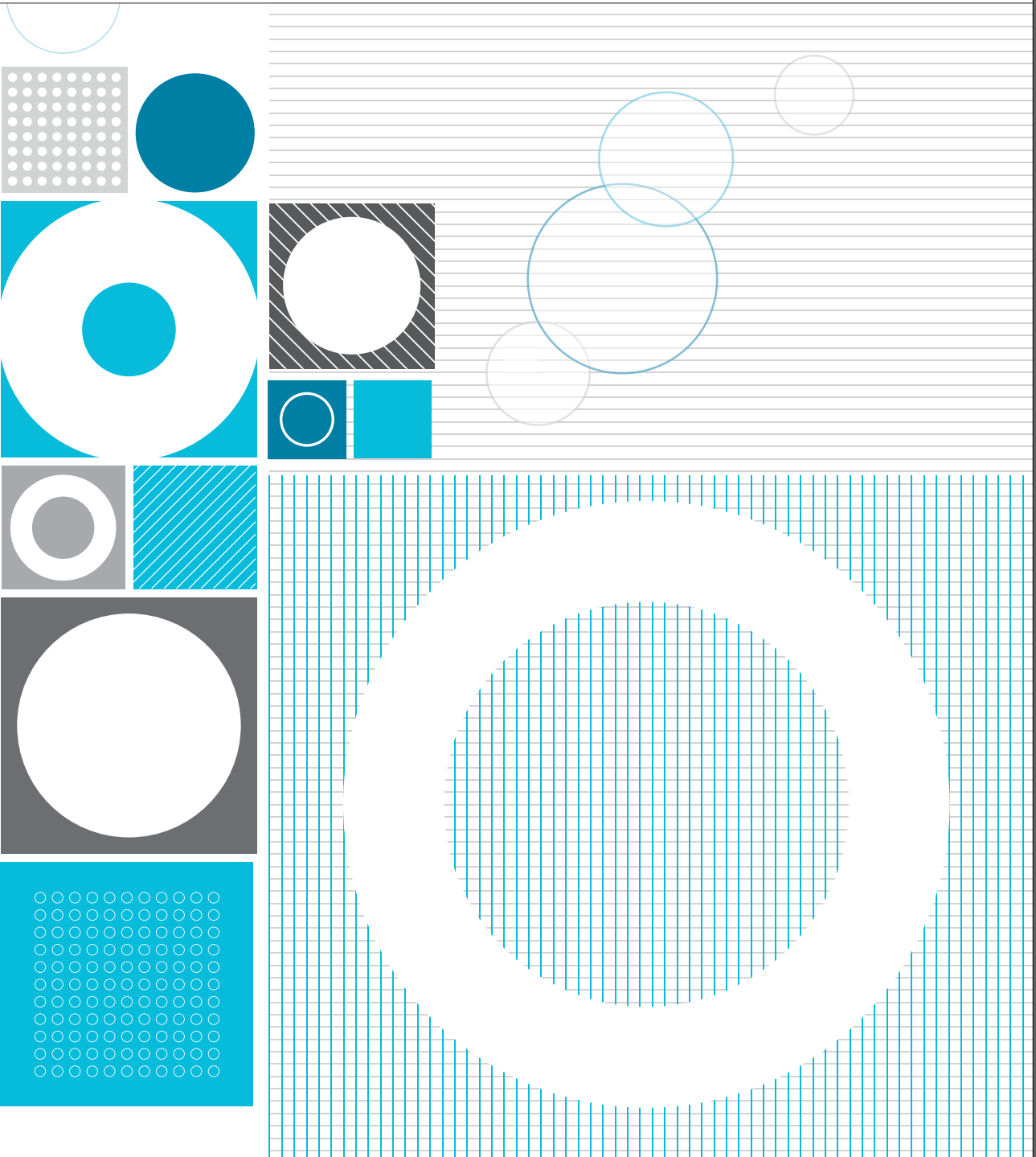




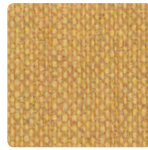
om | smart seating

elevation | engrave | jive | key largo | latitude | polygon | score | tattersall





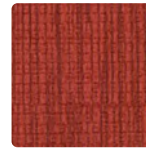
ELEVATION
451-002 Caramel



KEY LARGO
KL-012 Wheat



SCORE
SE-009 Spice



SCORE
SE-001 Rouge



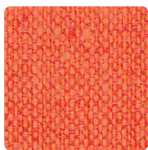
LATITUDE
454-007 Topaz



TATTERSALL
WC707-019 Spice



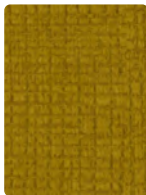
KEY LARGO
KL-022 Jonquil



KEY LARGO
KL-009 Tangerine



KEY LARGO
KL-019 Cayenne



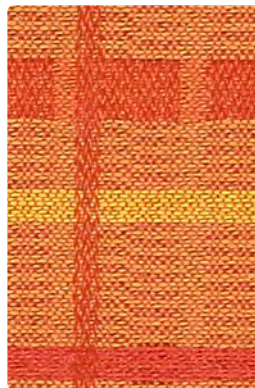
ENGRAVE
634-002 Marigold



ENGRAVE
634-009 Pumpkin



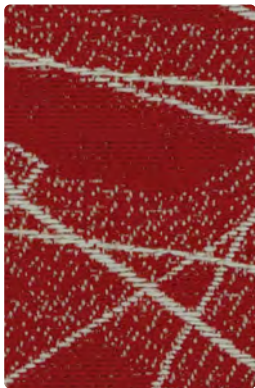
ENGRAVE
634-019 Papaya



TATTERSALL
WC707-009 Mango



JIVE
461-009 Mango



ELEVATION
451-001 Ruby



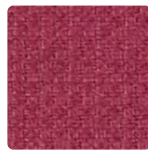
LATITUDE
454-009 Amber



ENGRAVE
634-001 Scarlet



POLYGON
452-001 Mulberry



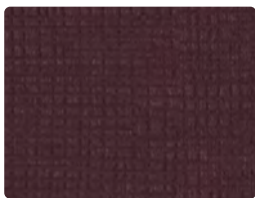
KEY LARGO
KL-011 Raspberry



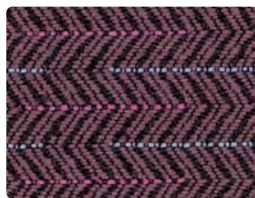
KEY LARGO
KL-001 Crimson



ENGRAVE
634-018 Jam



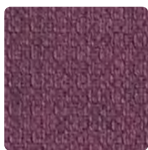
ENGRAVE
634-008 Raisin



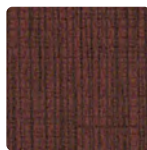
JIVE
461-005 Aubergine



SCORE
SE-005 Violet



KEY LARGO
KL-015 Crocus



SCORE
SE-008 Raisin

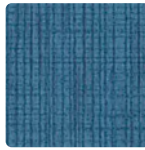


TATTERSALL
WC707-001 Mulberry





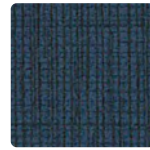
TATTERSALL
WC707-004 Cobalt



SCORE
SE-024 Cyan



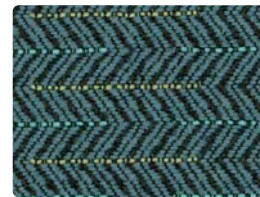
SCORE
SE-004 Indigo



SCORE
SE-014 Midnight



POLYGON
452-004 Navy



JIVE
461-014 Aegean



ENGRAVE
634-005 Periwinkle



ENGRAVE
634-023 Mallard



ENGRAVE
634-004 Indigo



KEY LARGO
KL-014 Aegean



SCORE
SE-013 Emerald



KEY LARGO
KL-004 Ultramarine



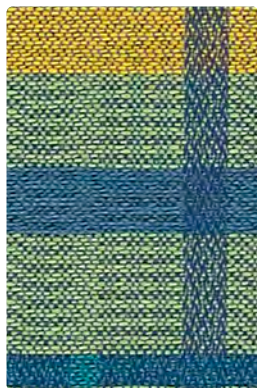
ELEVATION
451-004 Indigo



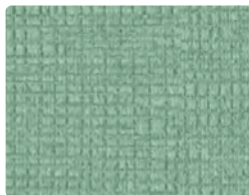
LATITUDE
454-004 Cobalt



LATITUDE
454-014 Aquamarine



TATTERSALL
WC707-003 Mallard



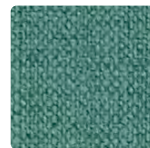
ENGRAVE
634-033 Tourmaline



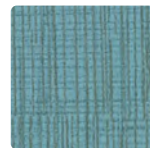
JIVE
461-003 Emerald



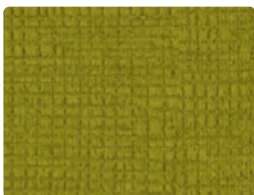
SCORE
SE-033 Aquamarine



KEY LARGO
KL-024 Nassau



SCORE
SE-034 Turquoise



ENGRAVE
634-003 Apple



POLYGON
452-003 Grass



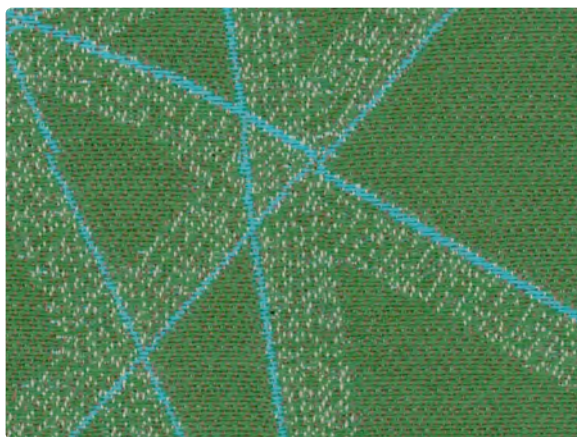
SCORE
SE-003 Basil



KEY LARGO
KL-033 Pear



KEY LARGO
KL-013 Palm



ELEVATION
451-003 Spearmint

Pattern/ Width	Content and Backing	Certifications	Weight/ Linear Yd.	Pattern Repeat	Finish	Abrasion (Wyzenbeek)	Breaking Strength	Croaking	Light- Fastness	Flammability	Cleaning Code
Elevation Directional Grade E+15	100% Post-Consumer Recycled Polyester Backing: Acrylic	GREENGUARD GOLD Certified	15.8 oz./lin. yd.	14.25" H 13.25" V Non-Matching	Stain Repellent - PFOA and PFOS Free	80,000 Double Rubs	Warp: 233 lbs. Fill: 273	Dry: Grade 4 min. Wet: Grade 3 min.	40 hours	Passes Cal 117-2013; BC, WS NFPA 260/UFAC Class 1	
Engrave Directional Grade C	100% Polyester Backing: Polyester	GREENGUARD GOLD Certified	15.68 oz./lin. yd.	None	Nanotex®	100,000 Double Rubs	Warp: 107 lbs. Fill: 120	Dy: Grade 4 min. Wet: Grade 4 min.	40 hours	Passes Cal 117-2013; W NFPA 260/UFAC Class 1	
Jive Directional Grade C	100% Polyester Backing: Acrylic	GREENGUARD GOLD Certified	12.43 oz./lin. yd.	1.2" H 0.4" V	Stain Repellent - PFOA and PFOS Free	82,000 Double Rubs	Warp: 231 lbs. Fill: 183	Dy: Grade 4 min. Wet: Grade 4 min.	40 hours	Passes Cal 117-2013; S NFPA 260/UFAC Class 1	
Key Largo Directional Grade C	85% Vinyl - Phthalate Free face, 15% Polyester backing	GREENGUARD Certified	28 oz./lin. yd.	None	Soil and Stain Resistant Top Coat with Ink Resistant Technology	250,000^ Double Rubs	Warp: 95 lbs. Fill: 60	Dy: Grade 4 min. Wet: Grade 4 min.	650 hours	Passes Cal 117-2013; BC, CFC NFPA 260/UFAC Class 1	
Latitude Directional Grade E+30	80% Pre-Consumer Recycled Polyester, 20% Nylon Backing: Acrylic	GREENGUARD GOLD Certified	11.4 oz./lin. yd.	7.125" H, 5.9375" V	Stain Repellent - PFOA and PFOS Free	100,000 Double Rubs	Warp: 92 Fill: 227	Dry: Grade 4 min Wet: Grade 3 min	40 hours	Passes Cal 117-2013; WS NFPA 260/UFAC Class 1	
Polygon Directional Grade D	60% Post-Consumer Recycled Polyester, 40% Rayon Backing: Acrylic	GREENGUARD GOLD Certified	13 oz./lin. yd.	3.5" H, 4.5" V	GreenShield - PFOA and PFOS Free	100,000 Double Rubs	Warp: 246 Fill: 84	Dry: Grade 4 min. Wet: Grade 4 min.	40 hours	Passes Cal 117-2013; WS NFPA 260/UFAC Class 1	
Score Directional Grade E+15	45% Polyurethane Polycarbonate - PVC Free face, 55% Polyester backing	GREENGUARD Certified	20 oz./lin. yd.	None	WRITE-AWAY - Soil and Stain Resistant Top Coat with Ink Resistant Technology	250,000^ Double Rubs	Warp: 119 Fill: 239	Dry: Grade 4 min. Wet: Grade 4 min.	200 hours	Passes Cal 117-2013; BC, CFC NFPA 260/UFAC Class 1	
Tattersall Directional Discontinued	62% Post-Consumer Recycled Polyester, 38% Eco-Intelligent® Polyester (Antimony Free) Backing: Crypton® Green	GREENGUARD GOLD Certified	13.3 oz./lin. yd.	7.3" H, 5.2" V	Crypton® Green with Antimicrobial Silver Ion Technology	100,000 Double Rubs	Warp: 203 Fill: 184	Dry: Grade 4 Wet: Grade 4	40 hours	Passes Cal 117-2013; BC, C NFPA 260/UFAC Class 1	

CLEANING INFORMATION

BC – Bleach Cleanable: 1 part bleach, 9 parts water = 10% bleach, 90% water solution. Do not clean/disinfect fabric for longer than 10 minutes using the 10% bleach solution. Always rinse promptly with clean water after applying the bleach solution. Failure to do so will void any and all warranties.

C – Crypton Cleaning: Crypton fabrics are available in various fiber types, and all Crypton fabrics can be cleaned with soap and water. For the best cleaning solution, use CRYPTON UPHOLSTERY CLEANER, available from Mayer Fabrics.

CFC - Coated Fabrics Cleaning: Refer to Mayer website for complete cleaning info.

S - Solvent Cleaner: Spot clean, using a mild water-free solvent or dry cleaning product. Clean only in a well-ventilated room and avoid any product containing carbon tetrachloride or other toxic materials. Pretest a small area before proceeding. Always rinse promptly with clean water.

W - Water-Based Cleaner: Spot clean, using the foam only from a water-based cleaning agent, such as a mild detergent or non-solvent upholstery shampoo product. Apply foam with a soft brush in a circular motion. Always rinse promptly with clean water. Vacuum when dry. Pretest small area before proceeding.

WS – Water/Solvent Cleaner: Spot clean with a mild solvent, an upholstery shampoo, or the foam from a mild detergent. When using a solvent or dry cleaning product, follow instructions carefully and clean only in a well-ventilated room. Avoid any product that contains carbon tetrachloride or other toxic materials. With either method, pretest a small area before proceeding. Always rinse promptly with clean water.

For additional care and cleaning information by pattern and a list of approved cleaners, please refer to Mayerfabrics.com and/or omseating.com websites.

DYE TRANSFER DISCLAIMER

Certain clothing and accessory dyes (such as those used on denim jeans) may migrate to lighter colors. This phenomenon is increased by humidity and temperature and is irreversible. Mayer Fabrics will not assume responsibility for dye transfer caused by external contaminants. Please check compatibility when using this product in combination with painted or varnished surfaces.

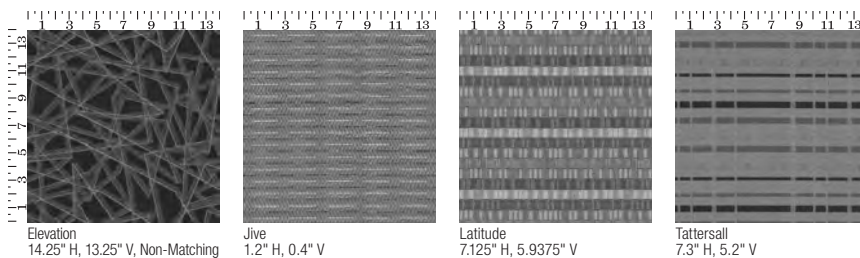
ADDITIONAL INFORMATION

Cal TB 133: All patterns may comply with California Technical Bulletin 133 when combined with appropriate components.

^Abrasion: Multiple factors affect fabric durability and appearance retention, including end-user application and proper maintenance. Wyzenbeek results above 100,000 double rubs have not been shown to be a reliable indicator of increased fabric lifespan.

Digital Swatch Card Color Matching: Due to color variations on different monitors and color printers, actual swatch colors may vary slightly. Please request a memo sample from Mayer Fabrics to ensure proper color representation.

Specifications: Specifications are correct at the time of printing. Current detailed specifications are available on the Mayer Fabrics website.



These fabrics meet or exceed these ACT performance guidelines. *Certification Marks owned by ACT®

*This term and any corresponding data refer to typical performance in the tests indicated and should not be construed to imply the behavior of this or any other material under actual fire conditions.