

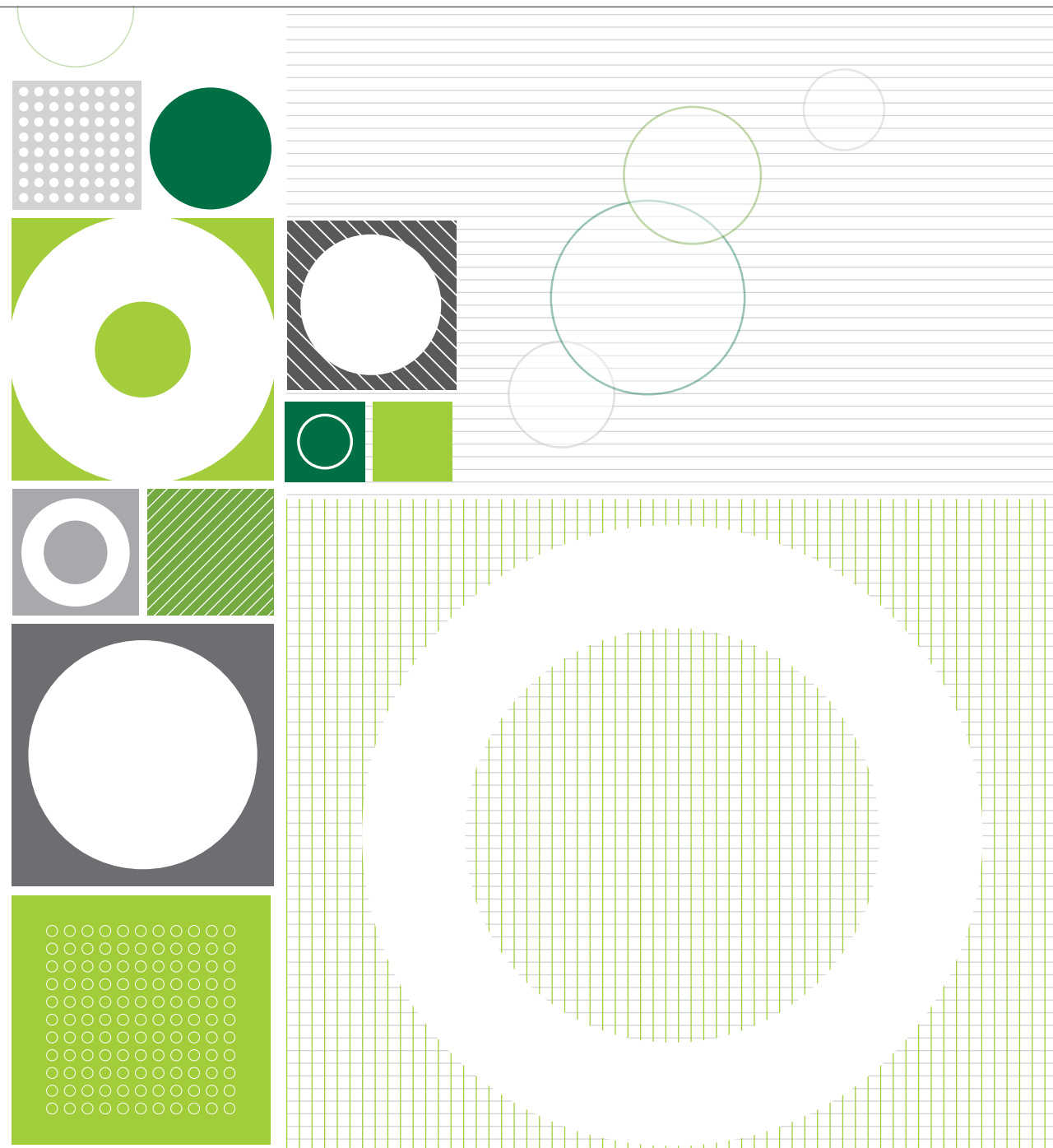
om commercial-contract basics in-stock

om commercial-contract basics in-stock



basic | celestial | spice | type

basic | celestial | spice | type



basic

<b>Content:</b> 100% Marquesa® Lana <b>Width:</b> 54" <b>Weight:</b> 16.0 oz./linear yard <b>Backing:</b> Acrylic <b>Finish:</b> Teflon® <b>Repeat:</b> None <b>Directional:</b> No <b>Railroaded:</b> No	<b>PERFORMANCE</b> <b>Surface Abrasion:</b> ASTM D-4157 (Wire Screen) <b>Breaking Strength:</b> ASTM D-5034 <b>Seam Slippage:</b> ASTM D-4034 <b>Colorfastness to Crocking:</b> AATCC 8 <b>Colorfastness to Light:</b> AATCC 16E	<b>TEST METHOD</b> ASTM D-4157 (Wire Screen) ASTM D-5034 ASTM D-4034 AATCC 8 AATCC 16E	<b>RESULTS</b> 250,000 Double Rubs Warp: 300 lbs / Fill: 300 lbs Warp: 91.3 lbs / Fill: 95 lbs Dry: Class 5 / Wet: Class 5 400 hrs. - Class 5
<b>Flammability*</b> California TB 117-2013, Section 1 Passes CS-191-53, Class 1 Passes BIFMA X5.7-1991 Passes NFPA 260 (Equivalent to UFAC) Class 1 Passes	<b>Cleaning Code:</b> WS (Water/Solvent Cleaner) <b>Cleaning Instructions:</b> <ul style="list-style-type: none"> <li>For water based stains, use mild detergent foam or upholstery shampoo.</li> <li>For oil based stains, spot clean with a dry cleaning solvent.</li> <li>Always test an area first</li> </ul>		

celestial

<b>Content:</b> 100% Polyester <b>Width:</b> 54" <b>Weight:</b> 14.2 oz./linear yard <b>Backing:</b> Acrylic <b>Finish:</b> Stain Repellent <b>Repeat:</b> None <b>Directional:</b> No <b>Railroaded:</b> No	<b>PERFORMANCE</b> <b>Surface Abrasion:</b> ASTM D-4157 (Wyzenbeek) <b>Breaking Strength:</b> ASTM-D-5034 <b>Seam Slippage:</b> ASTM-D-4034 <b>Colorfastness to Crocking:</b> AATCC 8 <b>Colorfastness to Light:</b> AATCC-16 <b>GREENGUARD Gold Certified</b>	<b>TEST METHOD</b> ASTM D-4157 (Wyzenbeek) ASTM-D-5034 ASTM-D-4034 AATCC 8 AATCC-16	<b>RESULTS</b> Passes 183,000 Double Rubs Warp: 395.2 lbs. / Fill: 298 lbs. Warp: 81 lbs. / Fill: 70 lbs. Dry: Class 4 min / Wet: Class 4 40 hours - Class 4
<b>Flammability*</b> California TB 117-2013 Passes NFPA 260 (Equivalent to UFAC) Passes ASTM E84 (Adhered) Class 2 or B Passes	<b>Cleaning Code:</b> WS (Water/Solvent Cleaner) <b>Cleaning Instructions:</b> <ul style="list-style-type: none"> <li>Spot clean, using a mild water-free solvent or dry cleaning product.</li> <li>Clean only in a well-ventilated room and avoid any product containing carbon tetrachloride or other toxic materials.</li> <li>Pretest a small area before proceeding. Always rinse promptly with clean water.</li> </ul>		

spice

<b>Content:</b> 100% Recycled Polyester <b>Width:</b> 54" <b>Weight:</b> 11.5 oz./linear yard <b>Backing:</b> Acrylic <b>Finish:</b> Teflon® <b>Repeat:</b> None <b>Directional:</b> No <b>Railroaded:</b> No	<b>PERFORMANCE</b> <b>Surface Abrasion:</b> ASTM-D-4157 (Wyzenbeek) <b>Breaking Strength:</b> ASTM-D-5034 <b>Seam Slippage:</b> ASTM-D-4034 <b>Colorfastness to Crocking:</b> AATCC 8 <b>Colorfastness to Light:</b> AATCC 16E	<b>TEST METHOD</b> ASTM-D-4157 (Wyzenbeek) ASTM-D-5034 ASTM-D-4034 AATCC 8 AATCC 16E	<b>RESULTS</b> 400,000 Double Rubs Warp: 300 lbs / Fill: 220.0 lbs. Warp: 87.0 lbs / Fill: 87.0 lbs. Dry: Class 5 / Wet: Class 5 60 hours - class 5
<b>Flammability*</b> California TB 117-2013, Section 1 Passes CS-191-53, Class 1 Passes BIFMA X5.7-1991 Passes NFPA 260 (Equivalent to UFAC), Class 1 Passes	<b>Cleaning Code:</b> WS (Water/Solvent Cleaner) <b>Cleaning Instructions:</b> <ul style="list-style-type: none"> <li>For water based stains, use mild detergent foam or upholstery shampoo.</li> <li>For oil based stains, spot clean with a dry cleaning solvent.</li> <li>Always test an area first.</li> </ul>		

type

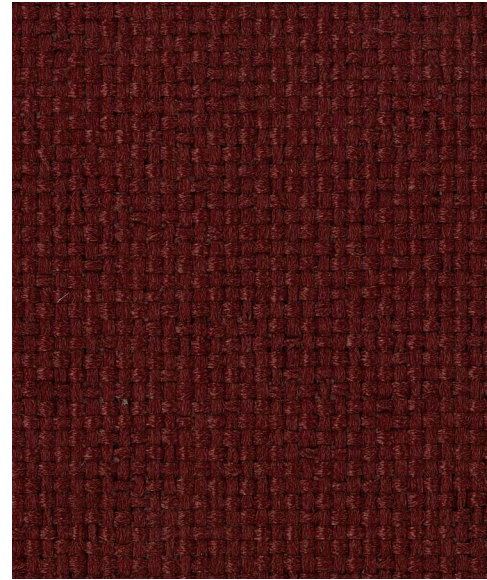
<b>Content:</b> 90% polyester, 6% pre-consumer recycled polyester, 4% post-consumer recycled polyester <b>Width:</b> 54" <b>Weight:</b> 12.9 ± 1.0 oz./lin. yard <b>Backing:</b> Acrylic <b>Finish:</b> Stain Repellent <b>Repeat:</b> 1.5" vertical 2" horizontal <b>Directional:</b> yes <b>Railroaded:</b> no	<b>PERFORMANCE</b> <b>Surface Abrasion:</b> ASTM D4157 (Cotton Duck) <b>Breaking Strength:</b> ASTM D5034 <b>Seam Slippage:</b> ASTM D4034 <b>Colorfastness to Crocking:</b> AATCC 8 <b>Colorfastness to Light:</b> AATCC 16 Option 3	<b>TEST METHOD</b> ASTM D4157 (Cotton Duck) ASTM D5034 ASTM D4034 AATCC 8 AATCC 16 Option 3	<b>RESULTS</b> 100,000 Double Rubs Warp: 200 lbs. / Fill: 155 lbs. Warp: 100 lbs. / Fill: 45 lbs Dry: Grade 4 min. / Wet: Grade 3 min. Grade 4 min. at 40 hours
<b>Flammability*</b> California TB 117-2013, Section 1 Passes NFPA 260 (Equivalent to UFAC) Passes	<b>Cleaning Code:</b> WS (Water/Solvent Cleaner) <b>Cleaning Instructions:</b> <ul style="list-style-type: none"> <li>Clean with water based cleaning agents, foam or pure, water free solvents.</li> <li>Vacuuming or light brushing is recommended to prevent dust and soil buildup.</li> </ul>		

**Additional Notes:** Individual samples available. Manufacturers will always attempt to ship to a satisfactory commercial match. Because of industry standard dye lot variation, colors may not match exactly. Specifications are correct at time of printing and are subject to change without notification. Additional specifications may be available by contacting OM.

\*This term and any corresponding data refer to typical performance in the tests indicated and should not be construed to imply the behavior of this or any other material under actual fire conditions.

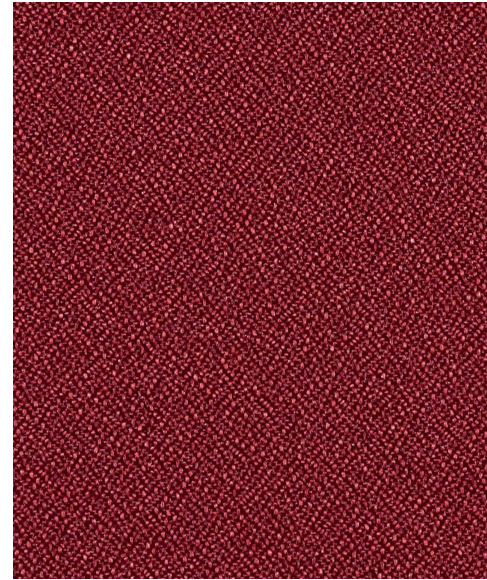
Visit [www.omseating.com](http://www.omseating.com) for more information about ergonomics and the design of omseating.

basic



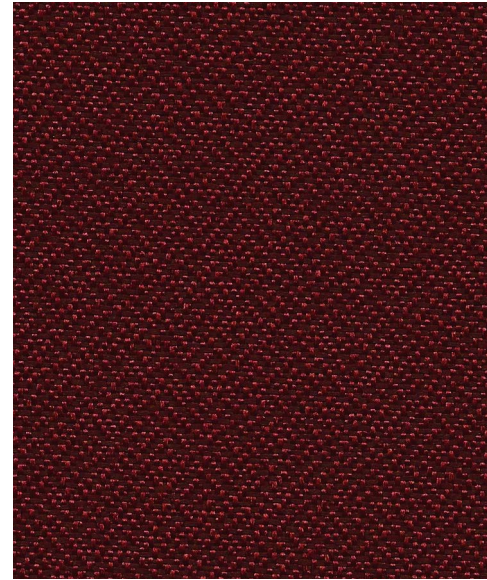
burgundy 1013

celestial



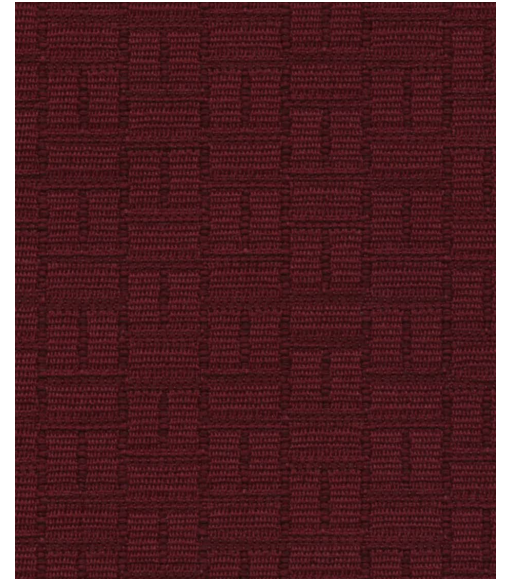
hyperion 1207

spice



paprika 1167

type



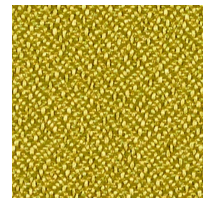
fairy 1307



blue 1005



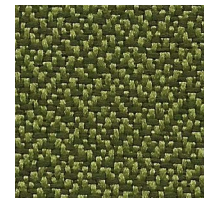
gray 1002



europa 1208



callisto 1203



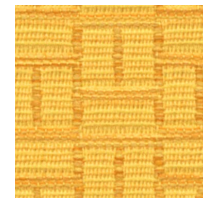
mint 1168



sesame 1166



leaf 1308



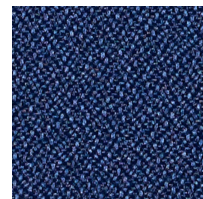
electric 1306



navy 1004



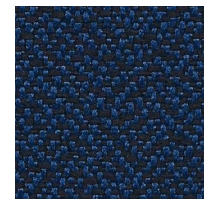
charcoal 1001



titan 1204



rhea 1201



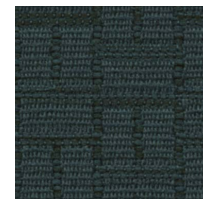
juniper 1164



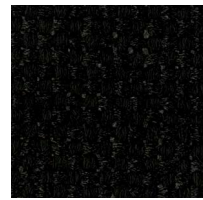
nutmeg 1163



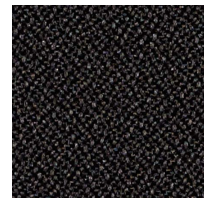
ice 1305



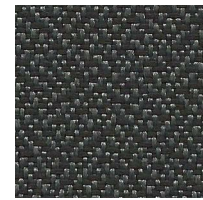
aqua 1304



black 1020



oberon 1200



pepper 1161



steel 1301



obsidian 1300