

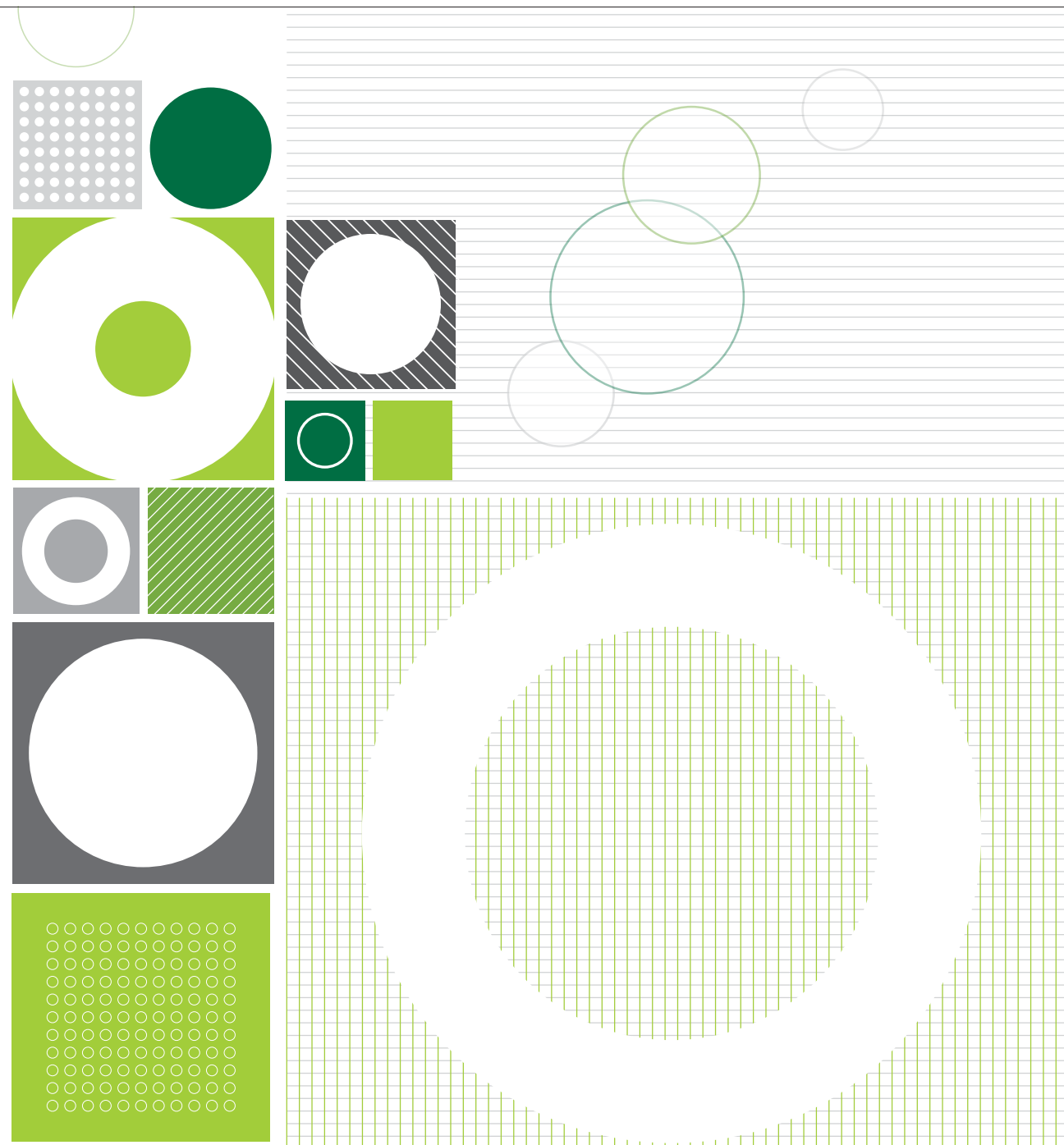
**om** | **comfortknits** in-stock

**om** | **comfortknits** in-stock



comfortknit solids (Repreve®) | architect (Repreve®) | myth

comfortknit solids (Repreve®) | architect (Repreve®) | myth



comfortknit solids (Repreve®)

<b>Content:</b> <b>Width:</b>	100% Repreve® PC Polyester Manufactured to dimension specification	<b>PERFORMANCE</b> <b>Surface Abrasion:</b> <b>Breaking Strength</b> <b>Pilling Resistance:</b> <b>Colorfastness to Crocking:</b> <b>Colorfastness to Light:</b> <b>Colorfastness to Water:</b>	<b>TEST METHOD</b> ASTM D4157 ASTM D5034 ASTM D3511 AATCC 8 AATCC16 Option 3 AATCC16-107	<b>RESULTS</b> Exceeds 250,000 Double Rubs Warp: 199.8 lbf. / Fill: 243.5 lbf. Class 5 min. Dry: Grade 5 / Wet: Grade 5 Grade 5 at 40 hrs. min. Class 5 min. for staining Class 5 min. for shade change
<b>Weight:</b> <b>Backing:</b> <b>Finish:</b> <b>Directional</b> <b>Railroaded</b>	16 oz./square yard None None Yes No	<b>Flammability*</b> California TB 117-2013 UFAC, Class 1 NFPA 260, Class 1	<b>Cleaning Code</b> <b>Cleaning Information</b>	<b>W (Water)</b> • Water based Cleaner • Water-based cleaning agents and foam may be used for cleaning. • Spot clean, with a solvent-free upholstery cleaner. Pretest a small area before proceeding

architect (Repreve®)

<b>Content:</b> <b>Width:</b>	100% Repreve® PC Polyester Manufactured to dimension specifications	<b>PERFORMANCE</b> <b>Surface Abrasion:</b> <b>Breaking Strength</b> <b>Pilling Resistance:</b> <b>Colorfastness to Crocking:</b> <b>Colorfastness to Light:</b> <b>Colorfastness to Water</b>	<b>TEST METHOD</b> ASTM D4157 ASTM D5034 ASTM D3511 AATCC 8 AATCC 16 Option 3 AATCC-107	<b>RESULTS</b> Exceeds 250,000 Double Rubs Warp: 209.4 lbf. / Fill: 251.6 lbf. Class 4 min. Dry: Grade 5 / Wet: Grade 5 Grade 5 at 40 hrs. min. Class 5 min. for staining Class 5 min. for shade change
<b>Weight:</b> <b>Backing:</b> <b>Finish:</b> <b>Repeat:</b> <b>Directional:</b> <b>Railroaded:</b>	16 oz./square yard None None None Yes No	<b>Flammability*</b> California TB 117-2013 UFAC, Class 1 NFPA 260, Class 1	<b>Cleaning Code</b> <b>Cleaning Information</b>	<b>W (Water)</b> • Water based Cleaner • Water-based cleaning agents and foam may be used for cleaning. • Spot clean, with a solvent-free upholstery cleaner. Pretest a small area before proceeding

myth

<b>Content:</b> <b>Width:</b>	100% polyester Manufactured to dimension specifications	<b>PERFORMANCE</b> <b>Surface Abrasion:</b> <b>Breaking Strength</b> <b>Pilling Resistance:</b> <b>Colorfastness to Crocking:</b> <b>Colorfastness to Light:</b>	<b>TEST METHOD</b> ASTM D4157 ASTM D5034 ASTM D3511 AATCC 8 AATCC 16 Option 3	<b>RESULTS</b> 250,000 Double Rubs Warp: 200 lbf. / Fill: 150 lbf. Class 4 min. Dry: Grade 4 min. / Wet: Grade 3 min. Grade 4 min. at 40 hours
<b>Weight:</b> <b>Backing:</b> <b>Finish:</b> <b>Repeat:</b> <b>Directional:</b>	18.0 ± 1.0 oz./square yard None None None No	<b>Flammability*</b> California TB 117-2013 UFAC, Class 1 NFPA 260, Class 1	<b>Cleaning code:</b> <b>Cleaning Instruction:</b>	<b>WS (Water/Solvent Cleaner)</b> • Clean with water based cleaning agents, foam or pure, water free solvents. • Vacuuming or light brushing is recommended to prevent dust and soil buildup

Multiple factors affect fabric durability and appearance retention, including end-use application and proper maintenance. Wyzenbeek results above 100,000 double rubs have not been shown to be a reliable indicator of increased fabric lifespan.

**REPREVE®**

Your choice of **comfortknit** and/or **architect** can help save the planet...How? OM has partnered with **Repreve®** to use reclaimed plastic bottles in the construction of these two upholstery patterns. So, with your help we can save up to 22 x 500 mL bottles per chair from ending up in landfills. Look good, feel good.

Learn more at [omseating.com](http://omseating.com), keyword "Sustainable Environmentalism".

**Additional Notes**

Individual samples available. Please send requests to [samples@omseating.com](mailto:samples@omseating.com). Manufacturers will always attempt to ship to a satisfactory commercial match. Because of industry standard dye lot variation, colors may not match exactly. Specifications are correct at time of printing and are subject to change without notification. Additional specifications may be available by contacting OM.

\*This term and any corresponding data refer to typical performance in the tests indicated and should not be construed to imply the behavior of this or any other material under actual fire conditions.

Visit [www.omseating.com](http://www.omseating.com) for more information about ergonomics and the design of **omseating**.

comfortknit solids (Repreve®)



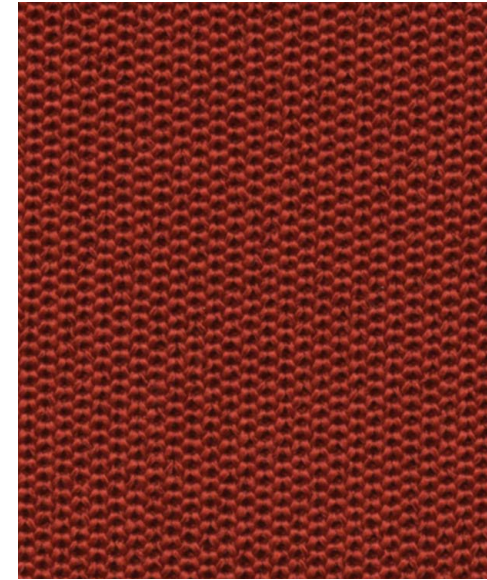
wine 5539

architect (Repreve®)

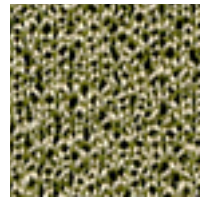


wright 5709

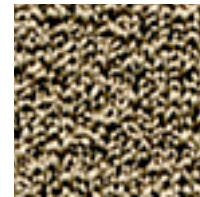
myth



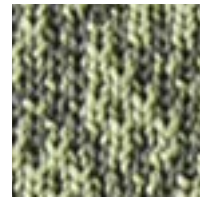
ares 5207



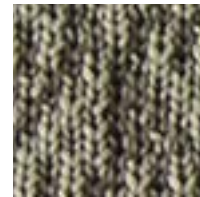
xanadu 5512



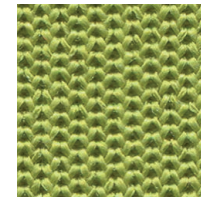
cappuccino 5506



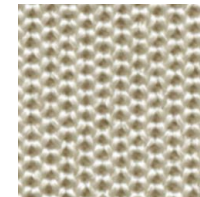
hadid 5708



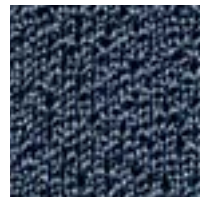
yamasaki 5706



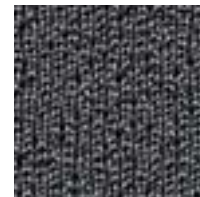
medusa 5208



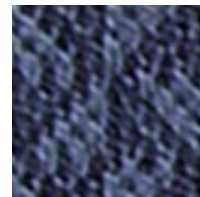
perseus 5202



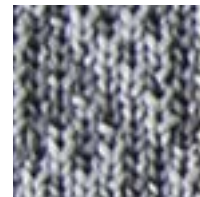
baltic 5515



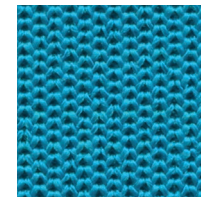
smoke 5503



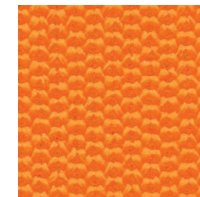
pei 5705



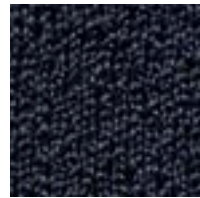
kahn 5702



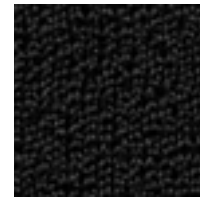
zeus 5205



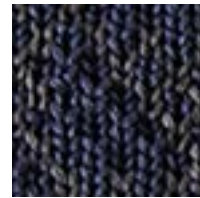
hermes 5203



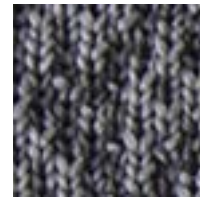
monarch 5502



flint 5501



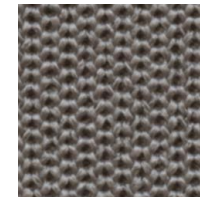
meier 5704



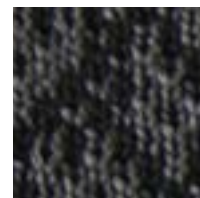
gaudi 5701



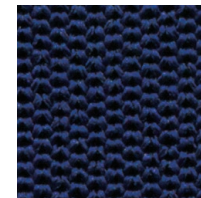
hercules 5206



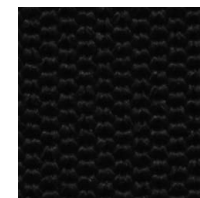
persephone 5201



gehry 5700



poseidon 5204



hades 5200